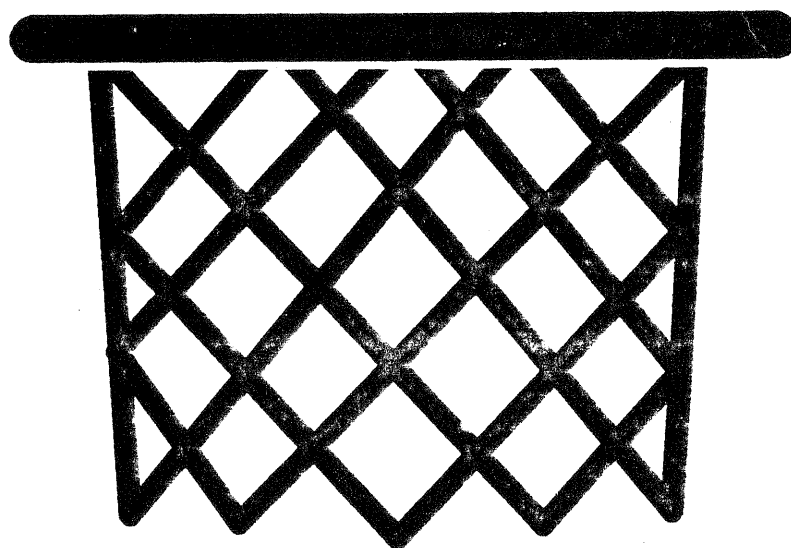
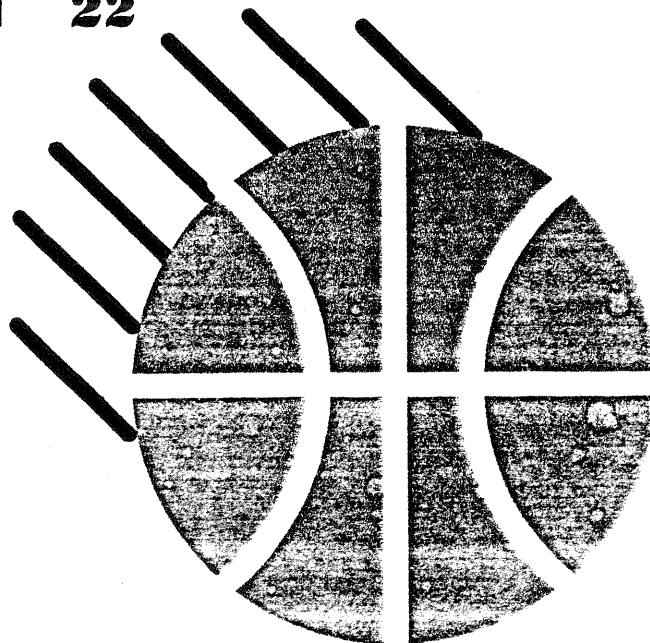


1996-97
LOGANVILLE
HIGH SCHOOL
BOYS BASKETBALL
FINAL RESULTS

WON 22

LOST 4



ANNUAL BASKETBALL BOOKLET
VOLUME III

Big fourth quarter lifts Devils over Hart County

By JAY FOUST
Sports Editor

LOGANVILLE — The No. 8 Loganville Red Devils erupted for 33 points in the fourth quarter Tuesday night to carry them to a 84-62 victory over the Hart County Bulldogs.

"It was a battle," said Loganville head coach Ron Bradley. "They (Hart County) didn't shoot well in the fourth quarter (0-for-8 on three-point shots) and that really made a difference."

"We were 10-for-12 in the fourth quarter and that sure makes it tough for a team to come back."

Zeb Reid scored 13 points and Brian Hobbs added 11 points as the Red Devils (16-2) put together a 25-8 run over the final six minutes to break open a close game.

Hart County opened the game with five three-pointers, three from Greg Rausey, and jumped to a 17-9 lead with four minutes gone in the first quarter.

Loganville hold off the Bulldogs and carry a 35-32 lead into the half.

Hart County kept the game close in the third quarter and was able to cut the Red Devils' lead to 51-50 on a Ferrell Rausey layup at the buzzer.

Travis Stephens opened the fourth quarter with a short jumper to extend the lead to 53-50 but the Bulldogs hit two-free throws cut the lead back to one point with six and a half minutes left in the game.

Hobbs converted a three-point play to push the Red Devils' lead to four points. Hart County got another layup from Ferrell Rausey to make the score 56-53.

Baile buried his third three of the game off and running.

Hart County only managed six points in the final five minutes of the game.

Reid led all scorers with 25 points. Hobbs finished with 16 as four Red starters were in double figures in a 40-20 game from host East Hall.

Baile chipped in 11 points. Stephens added eight points. Greg Rausey was the top scorer for the Bulldogs with 18 points.

The Red Devils traveled to Hart County Friday night and Saturday.

Loganville will host the No. 10 Loganville Red Elephants Tuesday night. The Red Devils handed the Red Elephants the first defeat of the season with a 61-44 win in December.

Loganville keeps rolling



Loganville deals East Hall first losses in new gym

By JAY FOUST
Sports Editor

GAINESVILLE — The Loganville High School basketball team made history Tuesday night as they swept two games from host East Hall.

The No. 7-ranked Red Devils averaged an overtime loss in January as they edged the Vikings 63-61 while the No. 9-ranked Lady Devils dropped the No. 10 ranked Lady Vikings 49-44 in overtime.

The losses were the first suffered by the East Hall teams in their newly completed gymnasium.

The two defeats also marked the first time since 1967 that both the East Hall boys and girls teams lost games on the same night.

"That says a lot about the tradition of good basketball at East Hall," said Loganville head coach Ron Bradley. "It's a stage really think about."

The Red Devils trailed by 10 points at the half but really wanted to win this one and we played hard and were able to come back."

The Red Devils shot 59 percent in the second half and played excellent defense, especially against East Hall's Chelsey Watson.

Watson burned the Red Devils for 38 points, including a game tying three-pointer that forced overtime in the teams' first meeting, but was held to only 20 points Tuesday night.

"We did a good job against Watson," Ron Bradley said. "Brian Hobbs deserves a lot of the credit as he defended him (Stephens) and Eric but Travis (Matt Needham) and Eric (Grover) also played him."

Milos Paravinja paced the Red Devils with 18 points and points and was 5-of-6 from the floor in the second half.

Zeb Reid finished with 15 points and Stephens had eight assists.

Back in the top 10 after three weeks, the Lady Red Devils (18-5, 9-4) faced a determined foe with an upset on its mind.

It was a struggle," said Red Devils head coach Bradley. "It was a tough road but we pulled it off."

The Lady Vikings defense slowed down Loganville's offense and cooled off their shooting in the first half.

The Lady Red Devils hit only 5-of-22 shots from the field in the first half and trailed 18-13 at halftime.

"They (East Hall) played full-court defense and didn't give us anything," Hall Bradley said. "Nothing came easy for us Tuesday night. We had to work for everything we got."

Loganville's shooting improved in the third quarter and the Lady Red Devils led 30-25 at the start of the fourth quarter.

East Hall had a two-point lead late, but Suzanne Howell hit two free throws with eight seconds left in regulation to tie the game and send it into overtime.

Loganville got the lead in the overtime and hit 4-of-6 free throws for the win.

Helen Sexton was the top Lady Red Devils scorer with 12 points and Lewis Swords had 11 points.

Howell finished with eight points for Loganville.

Laney Harris and Kelli Needham each pulled down four rebounds.

Loganville ended its regular season Friday night at 19-10.

Coach Bradley's Red Devils "Awesome"



Reid leads Devils to tournament championship

By Bill Burson
Sports Editor

LOGANVILLE — Loganville won its own over Social Circle Again in the Christmas Tournament this past Red with the hot hand, scoring a second sweep in three games high 22 while the Red opponents over the four day Devils ran off to a 17-point lead in an average by the half.

companion with an average by the half. And in the process, the Red double figures with 18 and 13 margin of victory of 20 points Stephens and Baile also found Devils improved their overall points respectively.

Reid saved his best effort for record in 19-1 on the year. last scoring 26 against Monroe.

I was real proud of the kids," said Loganville head coach Ron Bradley. "They work hard, and they love to battle with them. I really said as enough."

Loganville tournament last Friday with a 17-10 win over Eastside. "17-10 Point man Zeb Reid, who poured in 20 points on the Red scored early and often as the Devils got out in an eight-point lead after the first quarter. Center Matt Needham chipped in eight first half points as Loganville stretched its lead to 18-12 by halftime.

In the second half, Ben Baile and Travis Stephens, who totaled 17 and 15 points, respectively, scored the last on the Eastside.

as throughout the tournament, it was Loganville's shooting that was the difference. But, this time it was from beyond the arc where the Red Devils hit nine of 17 three-point attempts thanks to Reid and backcourt mate Brian Hobbs who scored 19 points in the win.

"We've been in a zone lately," explained Bradley. "Over the last three weeks, our probably has been just like you draw it up on the board and when you someone that with the group of shooters we have. Well we started good basketball."

Tournament champions, Loganville High School, hit nine of 13 3-point shots on Monday to take the stand at 11-1 on the year and have plenty of momentum.



Red Devils jump to No. 6 with 2OT win

HARTWELL — The Loganville Red Devils made a giant leap into the polls this week, with a No. 6 ranking in Class AA, after their thrilling 67-63 double-overtime victory over the Hart County Bulldogs.

"It's a big jump," said Loganville head coach Ron Bradley, "but we've beaten some pretty good teams."

Against the Bulldogs, Loganville was down two points with five seconds left in regulation when Erik Grover grabbed a rebound

off a missed shot and tossed a shot over his head that went in to tie the score at 54 and send the game into overtime.

In the second overtime period, the Red Devils never trailed and Travis Stephens and Zeb Reid each sank two free throws to seal the victory.

Reid was the top scorer with 20 points. Matt Needham had 17 points and 14 rebounds. Ben Baile netted 15 points, grabbed 10 rebounds and had 4 steals.

Loganville's game. It was an opportunity to see their first intra-county

1996 - 97 ROSTER

SENIORS

	<u>HEIGHT</u>	<u>POSITION</u>
BEN BAILIE	6'4"	FORWARD
ERIK GROVER	6'2"	GUARD
TROY NASWORTHY	6'3"	FORWARD
MATT NEEDHAM	6'8"	CENTER
MILOS PARAVINJA	6'10"	FORWARD
ZEB REID	6'2"	GUARD
TRAVIS STEPHENS	6'5"	FORWARD

JUNIORS

ANDY BUELL	6'3"	FORWARD
BRIAN HOBBS	6'	GUARD
MATT NEESE	6'2"	FORWARD
BRANDON YANCEY	6'5"	FORWARD

SOPHOMORES

DAN BRYANT	6'2"	GUARD
TOMMY YANCEY	6'	GUARD
MATT MEDLIN	5'10"	GUARD

FRESHMAN

RUSS CHURCHWELL	6'2"	CENTER
-----------------	------	--------

HEAD COACH: RONALD M. BRADLEY

MANAGERS and
STATISTICIANS: BRIAN BROWN, NED BUTLER, BOBBY FOLDEN, RYAN
SPRINGER

CAMERA: LINDY MILLER SCOREBOOK AND
STAT BOOK: JAN BRADLEY

A TRIBUTE TO THE SENIORS

The seven young men who are the seniors on the '96-'97 Loganville High School Boys Basketball Team have given their many fans much to cheer about this year as they finished the season with a fine 22-4 record and two invitational tournament championships. Three of these seven have been part of teams who have compiled a 67-11 record during the past three years, which is the best record in the school's history. This year's team, led by these outstanding seniors, was in the Atlanta Journal-Constitution State Top Ten poll all season and has set many records including Best Field Goal Percentage (52%), Blocked Shots (105, avg. 4 per game). For the *second year in a row* their outstanding Free Throw Percentage (75%) will be entered into the National High School Sports Record Book as compiled by the National Federation of State High School Associations. This year's record will go into the record book currently in *4th place*, moving last year's LHS team record to 5th place. For Loganville High School to have *two* of the top five places in the all-time records in this category speaks very highly of these young men and their efforts.

BEN BAILIE has been a member of the varsity for two years and will be remembered for his great shooting ability. He averaged 11.8 points per game, led the team in three-point field goals with 60, which is a season record, and tied with three others with most steals in a game (4). He was named to the L.H.S. Christmas Invitational All-Tournament team. His fans will long remember his performance on Senior Night, his final game in the "Inferno" when he scored a career-high 20 points, including six three-pointers.

ERIK GROVER has been on the varsity for the past three years. When on the playing court, Erik could always be counted on to "make things happen." Probably his best game came against Social Circle when he scored 8 points and had two steals and three blocked shots. In the 24 games in which Erik played, he always gave a fine effort.

TROY NASWORTHY joined the team this year as a senior and made an appearance in eleven games. His best game came against Dacula when he scored five points and was 100% from the field.

MATT NEEDHAM began the season by scoring 71 points and pulling in 38 rebounds in the Jefferson TipOff Tournament, earning him Most Valuable Player honors for that tournament, and being named to the Atlanta Tipoff Club's Metro Team of the Month. This season Matt led the team in scoring in eight games, and was leading rebounder 19 times. He had individual game high performances in five different categories: best field goal percentage vs. Hart Co. - 83%; most offensive rebounds vs. Jefferson - 8; most defensive rebounds in another game vs. Jefferson - 13; most rebounds vs. Jefferson - 20; 5 blocked shots vs. Social Circle and Monroe; and tied with three others with 4 steals (vs. Providence). He also led the team in six categories for the season: 93 free throws, 94 offensive rebounds (3.6 avg.), 163 defensive rebounds (6.3 avg.), 257 rebounds (9.9 avg.), 53 blocked shots (2 avg.), and his 56.9% (148 of 260) total field goal percentage barely won team honors. He set new school records for blocked shots in a game and a season.

MILOS PARAVINJA arrived at Loganville High School late in the season and immediately endeared himself to his teammates, fans and fellow students with his unselfish and humble attitude and his basketball talents and ability. Being able to play in only six games, Milos averaged 14.5 points per game, was the leading scorer with 21 pts. vs. Dacula, and tied for leading rebounder vs. Jackson Co.

ZEB REID has been a member of the L.H.S. boys varsity basketball team for two seasons. During that time his hard work and effort enabled him to be an outstanding basketball player, earning him a spot on the Jefferson Invitational TipOff all-tournament team, Most Valuable Player of the L.H.S. Christmas Invitational, and the Atlanta Tipoff Club Metro Team of the Month for January. Averaging 21 points per game, Zeb led the team in individual game highs in six categories: most total field goals (14 vs. Jefferson); most three point field goals (8 vs. Jefferson); most free throws (9 vs. Jackson Co.); best free throw percentage (10 or more attempts in a game) (90% on 9 of 10 vs. Jackson Co.); most points in one quarter (21 vs. Franklin Co.); most points in one half (26 vs. Franklin Co.); most points in a game (40 vs. Jefferson). He also led the team in highs for the season in six categories: total field goals (210); best free throw percentage (89% on 73 of 82); scoring (540 points, 20.8 avg.); most steals (39, 1.5 avg.); most assists (154, 5.9 avg.); most consecutive free throws (22). His 2-point field goal percentage of 61% (163 of 269) and his 3-point field goal percentage of 46% (47 of 102) led the team and are new school records. Zeb's 22 consecutive free throws without a miss ties the school record, and he also hit 100% from the free throw line in 13 of the 20 games in which he shot free throws. Zeb finished his two-year career at L.H.S. with 966 total points.

TRAVIS STEPHENS, the only 3-year starter on the team, was named to the first L.H.S. Invitational all-tournament team. His 11 assists vs. Franklin Co. was a season high for the team and tied a school record. In another Franklin game he was a perfect 100% from the field and free throw line. His career-best game came in the last game of the season vs. East Hall when he had a career-high 26 points, shooting 80% (8/10) from the field (including 4/4 3-pters.), 86% from the free throw line (6/7), 6 assists, one blocked shot and led the team in rebounding. This season he was 2nd in assists (133, 5.1 avg.), offensive rebounds (72), total rebounds (185) and rebound average (7.1). His 83% free throw percentage (58 of 70) was 2nd on the team. He had a free throw shooting streak of 20 straight without a miss during the season, and was 100% from the free throw line in 11 of the 18 games in which he shot free throws. During his 3-year career Travis scored a total of 788 points, and holds the school FG% record of 57.3% (106 of 185) set in 1996 season.

This year's team will long be remembered for its exciting play, thrilling games, and big victories, but *most* of all (and most importantly), it will be remembered for the outstanding young men which comprised it. The seniors of the 1996-97 Loganville High School basketball team have had a successful high school career, and because of the quality and high standards of these young men, it can be safely said that they will all be successful in the most important *game of life*. We thank them for the pleasure they have brought us, the many long hours they have given, and the way they have represented us. We love you, we will greatly miss you, and we wish you *Godspeed* in your journey through life.

1996-97 FINAL RESULTS

OPPONENT	SITE	SCORES		HIGH SCORERS		HIGH REBOUNDERS	
		LHS	OPP				
North Hall	N	74	62	Matt Needham	26	Matt Needham	10
West Hall	N	73	71	Matt Needham	22	Matt Needham	15
Providence	N	73	60	Matt Needham	23	Matt Needham	13
Johnson	H	69	49	Matt Needham	16	Travis Stephens	11
				Travis Stephens	16		
Hart Co.	A	67	63	Zeb Reid	20	Matt Needham	14
Jackson Co.	H	80	63	Zeb Reid	24	Matt Needham	12
Gainesville	A	58	71	Zeb Reid	21	Matt Needham	7
Social Circle	H	79	37	Matt Needham	23	Matt Needham	12
Jefferson	A	77	60	Matt Needham	20	Matt Needham	13
				Zeb Reid	20	Travis Stephens	13
Eastside	H	71	53	Zeb Reid	20	Matt Needham	13
Social Circle	H	81	58	Zeb Reid	22	Ben Bailie	10
						Matt Needham	10
Monroe	H	84	47	Zeb Reid	26	Travis Stephens	7
Jefferson	H	102	77	Zeb Reid	40	Matt Needham	20
Franklin Co.	A	80	66	Zeb Reid	28	Matt Needham	10
East Hall	H	93	94	Matt Needham	29	Matt Needham	11
Dacula	H	77	54	Zeb Reid	24	Matt Needham	6
Johnson	A	65	56	Ben Bailie	24	Ben Bailie	7
						Matt Needham	7
Hart Co.	H	84	62	Zeb Reid	25	Travis Stephens	8
Jackson Co.	A	54	49	Ben Bailie	17	Travis Stephens	11
Social Circle	A	84	54	Zeb Reid	32	Ben Bailie	11
Gainesville	H	70	87	Zeb Reid	22	Travis Stephens	9
Franklin Co.	H	91	64	Zeb Reid	20	Matt Needham	9
				Ben Bailie	20		
East Hall	A	63	61	Matt Needham	18	Matt Needham	10
Dacula	A	80	48	Milos Paravinja	21	Matt Needham	12
Jackson Co.	A	69	54	Zeb Reid	17	Matt Needham	5
						Milos Paravinja	5
East Hall	A	75	92	Travis Stephens	26	Travis Stephens	5

OPPONENTS' FINAL STATISTICS

OPPONENTS' FIELD GOAL ATTEMPTS		1,497
OPPONENTS' FIELD GOALS MADE	2 pt.	396
	3 pt.	191
OPPONENTS' FIELD GOAL PERCENTAGE		39%
OPPONENTS' FREE THROW ATTEMPTS		416
OPPONENTS' FREE THROWS MADE		267
OPPONENTS' FREE THROW PERCENTAGE		64%
OPPONENTS' TOTAL POINTS		1,612
OPPONENTS' AVERAGE POINTS PER GAME		62
OPPONENTS' TOTAL FOULS		409
OPPONENTS' AVERAGE FOULS PER GAME		15.7
OPPONENTS' OFFENSIVE REBOUNDS		237
OPPONENTS' OFFENSIVE REBOUND AVERAGE PER GAME		9.1
OPPONENTS' DEFENSIVE REBOUNDS		354
OPPONENTS' DEFENSIVE REBOUND AVERAGE PER GAME		13.6
OPPONENTS' TOTAL REBOUNDS		591
OPPONENTS' REBOUND AVERAGE PER GAME		22.7

FINAL TEAM STATISTICS

FIELD GOAL ATTEMPTS		1,401
FIELD GOALS MADE	2 pt.	552
	3 pt.	181
FIELD GOAL PERCENTAGE	2 pt. (552 of 965)	57%
	3 pt. (181 of 436)	42%*
	Total (733 of 1401)	52%*
FREE THROW ATTEMPTS		437
FREE THROWS MADE		326
FREE THROW PERCENTAGE		75%*
TOTAL POINTS SCORED		1,973
AVERAGE POINTS PER GAME		75.9
TOTAL STEALS		219
AVERAGE STEALS PER GAME		8.4
TOTAL FOULS		380
AVERAGE FOULS PER GAME		14.6
TOTAL ASSISTS		505
AVERAGE ASSISTS PER GAME		19.4
TOTAL BLOCKED SHOTS		105
AVERAGE BLOCKED SHOTS PER GAME		4
TOTAL OFFENSIVE REBOUNDS		310
AVERAGE OFFENSIVE REBOUNDS PER GAME		11.9
TOTAL DEFENSIVE REBOUNDS		560
AVERAGE DEFENSIVE REBOUNDS PER GAME		21.5
TOTAL REBOUNDS		870
AVERAGE REBOUNDS PER GAME		33.5

FINAL RECORD

WON 22

LOST 4

**3-Pt. FG Percentage of 41.5% (181 of 436 attempts) to be entered into all-time 6th place in National High School Sports Record Book of the National Federation of State High School Associations.. Total FG Percentage of 52.3% (733 of 1401) to be submitted as 4th place. FT Percentage of 74.6% (326 of 437 attempts) to be entered into all-time 4th place, moving last year's record to 5th place.*

OPPONENTS' TOTALS

Date	FIELD GOALS										3 PTR			FREE THROW			TOTAL		
	ATT		MADE		TOTAL		%		ATT		MDE		%		PTS		REBOUNDS		
	1	2	1	2	ATT	MDE	%	ATT	MDE	%	ATT	MDE	%	PTS	OFF	DEF	TOT		
NORTH HALL	21	37	7	13	58	20	34%	26	9	20	13	65%	62	9	18	27			
WEST HALL	28	32	10	14	60	24	40%	27	10	18	13	72%	71	12	12	24			
PROVIDENCE	22	36	9	11	58	20	34%	22	8	20	12	60%	60	5	11	16			
JOHNSON CO (H)	27	30	15	5	57	20	35%	21	5	4	4	100%	49	12	10	22			
HART CO (A)	31	40	12	13	71	25	35%	36	8	11	5	45%	63	12	16	28			
JACKSON CO (H)	25	31	12	11	56	23	41%	21	9	10	8	80%	63	8	15	23			
GAINESVILLE (A)	21	30	10	11	51	21	41%	18	9	24	20	83%	71	9	13	22			
SOCIAL CIRCLE (H)	30	25	6	9	55	15	27%	16	3	12	4	33%	37	8	14	22			
JEFFERSON (A)	30	34	11	15	64	26	41%	13	2	8	6	75%	60	8	13	21			
EASTSIDE	27	38	9	11	65	20	31%	15	2	18	11	61%	53	9	16	25			
SOCIAL CIRCLE (H)	31	30	9	10	61	19	31%	16	7	22	13	59%	58	8	10	18			
MONROE	29	37	8	10	66	18	27%	13	4	14	7	50%	47	9	13	22			
JEFFERSON (H)	35	33	14	14	68	28	41%	22	10	14	11	79%	77	13	10	23			
FRANKLIN CO (A)	22	28	10	12	50	22	44%	23	11	23	11	48%	66	8	10	18			
EAST HALL (H)	27	45	13	22	72	35	49%	29	12	16	12	75%	94	13	14	27			
DACULA (H)	23	29	8	16	52	24	46%	15	3	7	3	43%	54	7	12	19			
JOHNSON (A)	20	29	6	14	49	20	41%	21	9	12	7	58%	56	6	10	16			
HART CO (H)	23	30	12	12	53	24	45%	27	8	8	6	75%	62	6	12	18			
JACKSON CO (A)	21	22	6	10	43	16	37%	18	6	19	11	58%	49	11	14	25			
SOCIAL CIRCLE (A)	27	36	8	11	63	19	30%	29	10	10	6	60%	54	7	11	18			
GAINESVILLE (H)	30	34	16	16	64	32	50%	21	8	20	15	75%	87	9	18	27			
FRANKLIN CO (H)	25	27	8	13	52	21	40%	27	13	12	9	75%	64	13	13	26			
EAST HALL (A)	25	33	14	9	58	23	40%	24	9	14	6	43%	61	7	16	23			
DACULA (A)	25	23	11	6	48	17	35%	17	5	16	9	56%	48	2	20	22			
JACKSON CO (A)	23	24	7	10	47	17	36%	20	4	20	16	80%	54	12	10	22			
EAST HALL (A)	32	24	14	14	56	28	50%	14	7	44	29	66%	92	14	23	37			
TOTALS	26	680	817	265	312	1497	577	39%	551	191	416	267	64%	1612	237	354	591		

PPG 62

RPG 22.7

TEAM TOTALS

Opponent	Date	ATT		MADE		TOTAL		%		3 PTR		FREE THROW		TOTAL		%		REG ASST VIOL		L.P.		BL		REBOUNDS	
		1	2	1	2	ATT	MDE	ATT	MDE	ATT	MDE	ATT	MDE	PTS	%	PTS	%	REG	ASST	VIOL	L.P.	BL	OFF	DEF	TOT
NORTH HALL	11/23	28	24	12	16	52	28	54%	15	3	24	15	63%	74	11	11	2	7	3	8	22	30			
WEST HALL	11/27	18	22	13	13	40	26	65%	8	3	25	18	72%	73	4	23	4	11	1	12	22	34			
PROVIDENCE	11/30	26	30	17	12	56	29	52%	7	4	13	11	85%	73	10	16	4	11	7	14	19	33			
JOHNSON CO (H)	12/03	29	35	12	16	64	28	44%	20	7	16	6	38%	69	7	11	2	9	5	21	18	39			
HART CO (A)	12/06	19	22	13	12	41	25	61%	13	6	21	11	52%	67	10	13	10	12	3	11	29	40			
JACKSON CO (H)	12/10	30	31	15	15	61	30	49%	25	13	8	7	88%	80	8	16	2	7	4	13	23	36			
GAINESVILLE (A)	12/13	23	29	9	12	52	21	40%	21	9	10	7	70%	58	6	12	6	10	4	14	8	22			
SOCIAL CIRCLE (H)	12/16	31	31	15	15	62	30	48%	13	7	13	12	92%	79	14	15	9	4	10	18	29	47			
JEFFERSON (A)	12/20	33	27	15	16	60	31	52%	13	5	10	10	100%	77	10	19	2	4	6	15	29	44			
EASTSIDE	12/27	27	21	13	11	48	24	50%	17	7	19	16	84%	71	10	22	3	7	4	11	27	38			
SOCIAL CIRCLE	12/28	21	31	15	15	52	30	58%	14	6	26	15	58%	81	9	19	3	5	6	13	23	36			
MONROE	12/30	27	27	16	15	54	31	57%	22	11	13	11	85%	84	4	23	3	7	11	7	18	25			
JEFFERSON (H)	01/04	34	34	20	19	68	39	57%	24	11	14	13	93%	102	10	29	0	5	0	19	25	44			
FRANKLIN CO (A)	01/07	17	28	9	18	45	27	60%	13	7	22	19	86%	80	4	25	3	8	1	9	24	33			
EAST HALL (H)	01/10	25	30	15	21	55	36	65%	12	6	21	15	71%	93	5	25	3	12	2	8	22	30			
DACULA (H)	01/14	34	24	16	15	58	31	53%	23	8	9	7	78%	77	14	21	1	9	2	11	17	28			
JOHNSON (A)	01/17	17	24	9	14	41	23	56%	15	7	12	12	100%	65	12	18	1	13	4	7	19	26			
HART CO (H)	01/21	30	24	15	16	54	31	57%	19	7	19	15	79%	84	4	25	2	5	0	9	19	28			
JACKSON CO (A)	01/24	26	16	10	9	42	19	45%	13	5	12	11	92%	54	2	17	0	6	4	9	20	29			
SOCIAL CIRCLE (A)	01/25	25	35	13	21	60	34	57%	15	5	15	11	73%	84	8	18	2	5	5	10	32	42			
GAINESVILLE (H)	01/28	23	28	12	13	51	25	49%	21	10	13	10	77%	70	1	19	3	10	6	8	20	28			
FRANKLIN CO (H)	01/31	29	29	18	14	58	32	55%	24	12	23	15	65%	91	13	24	2	2	4	14	22	36			
EAST HALL (A)	02/4	29	27	10	16	56	26	46%	13	4	8	7	88%	63	8	19	3	12	3	10	20	30			
DACULA (A)	02/7	31	33	14	17	64	31	48%	18	5	16	13	81%	80	17	29	4	3	4	14	24	38			
JACKSON CO. (A)	02/13	27	20	14	10	47	24	51%	17	5	19	16	84%	69	10	16	2	8	2	11	14	25			
EAST HALL (A)	02/21	24	36	7	15	60	22	37%	21	8	36	23	64%	75	6	20	4	9	4	14	15	29			
TOTALS	26	683	718	347	386	1401	733	52%	436	181	437	326	75.9%	1973	217	505	80	201	105	310	560	870			

PPG 75.9

RPG 33.5

1997 FINAL INDIVIDUAL STATISTICS

PLAYER	FIELD GOALS										FREE										TOTAL			REBOUNDS										
	ATT		MADE		TOTAL		%		3 PTR		THROW		%		PTS		PPG		REG		ASST VIOL		L.P.		BLOCKS		OFF		DEF		TOT		RPG	
	GP	1	2	1	2	ATT	MDE	%	ATT	MDE	ATT	MDE	%	ATT	MDE	PTS	PPG	REG	ASST	VIOL	L.P.	VIOL	L.P.	BLOCKS	OFF	DEF	TOT	RPG						
BRIAN HOBBS	26	58	73	26	38	131	64	49%	78	32	37	31	84%	191	7.3	38	79	15	37	6	12	39	51	2.0										
DAN BRYANT	12	0	6	0	1	6	1	17%	4	1	2	1	50%	4	0.3	1	3	2	2	0	2	0	2	0.2										
ZEB REID	26	179	192	101	109	371	210	57%	102	47	82	73	89%	540	20.8	39	154	18	56	1	9	37	46	1.8										
TOMMY YANCEY	12	0	9	0	2	9	2	22%	4	1	3	1	33%	6	0.5	3	3	2	0	0	1	1	2	0.2										
ERIK GROVER	24	24	35	13	18	59	31	53%	12	4	31	17	55%	83	3.5	19	27	10	14	7	28	38	66	2.8										
MATT MEDLIN	12	0	9	0	3	9	3	33%	3	1	2	1	50%	8	0.7	9	1	2	5	1	0	0	0	0.0										
BEN BAILIE	26	112	121	48	61	233	109	47%	145	60	35	28	80%	306	11.8	33	34	6	16	10	55	115	170	6.5										
RUSS CHURCHWELL	16	1	10	0	5	11	5	45%	0	0	8	5	63%	15	0.9	1	0	0	0	2	9	5	14	0.9										
MATT NEESE	17	0	3	0	1	3	1	33%	0	0	6	2	33%	4	0.2	1	2	0	2	1	2	8	10	0.6										
ANDY BUELL	20	1	13	0	7	14	7	50%	0	0	6	2	33%	16	0.8	2	0	1	3	3	6	16	22	1.1										
MATT NEEDHAM	26	146	114	76	72	260	148	57%	7	3	130	93	72%	392	15.1	35	57	9	22	53	94	163	257	9.9										
TRAVIS STEPHENS	26	127	89	64	46	216	110	51%	65	27	70	58	83%	305	11.7	31	133	9	34	11	72	113	185	7.1										
TROY NASWORTHY	11	0	8	0	3	8	3	38%	4	2	2	1	50%	9	0.8	0	1	1	0	2	3	1	4	0.4										
BRANDON YANCEY	10	0	4	0	3	4	3	75%	0	0	4	1	25%	7	0.7	1	1	0	2	1	7	2	9	0.9										
MILOS PARAVINJA	6	35	32	19	17	67	36	54%	12	3	19	12	63%	87	14.5	6	10	5	8	7	10	22	32	5.3										
TOTALS	26	683	718	347	386	1401	733	52%	436	181	437	326	75%	1973	75.9	219	505	80	201	105	310	560	870	33.5										

GAME HIGHS FOR TEAM

MOST FIELD GOAL ATTEMPTS	68; vs. Jefferson, 1-4-97
MOST FIELD GOALS MADE	39; vs. Jefferson, 1-4-97
BEST FIELD GOAL PERCENTAGE	65%; vs. West Hall, 11-27-96 65%; vs. East Hall, 1-10-97
MOST FREE THROW ATTEMPTS	36; vs. East Hall, 2-21-97
MOST FREE THROWS MADE	23; vs. East Hall, 2-21-97
BEST FREE THROW PERCENTAGE	100%; vs. Jefferson, 12-20-96 (10/10) 100%; vs. Johnson, 1-17-97 (12/12)
MOST OFFENSIVE REBOUNDS	21; vs. Johnson, 12-3-96
MOST DEFENSIVE REBOUNDS	32; vs. Social Circle, 1-25-97
MOST REBOUNDS	47; vs. Social Circle, 12-16-96
MOST STEALS	17; vs. Dacula, 2-7-97
MOST ASSISTS	29; vs. Jefferson, 1-4-97
MOST BLOCKED SHOTS	11; vs. Monroe, 12-30-96
MOST POINTS IN ONE QUARTER	33; vs. Jefferson, 1-4-97
MOST POINTS IN ONE HALF	55; vs. East Hall, 1-10-97
MOST POINTS IN GAME	102; vs. Jefferson, 1-4-97

INDIVIDUAL GAME HIGHS

MOST FIELD GOALS	(TOTAL) (3 POINT)	Zeb Reid; 14 vs. Jefferson 1-4-97 Zeb Reid; 8 vs. Jefferson 1-4-97
BEST FIELD GOAL PERCENTAGE	(10 or more attempts)	Matt Needham; 83% (10 of 12) vs. Hart. Co. 1-21-97
MOST FREE THROWS		Zeb Reid; 9 vs. Jackson Co. 2-13-97
BEST FREE THROW PERCENTAGE	(10 or more attempts)	Zeb Reid; 90% (9 of 10) vs. Jackson Co. 2-13-97
MOST OFFENSIVE REBOUNDS		Matt Needham; 8 vs. Jefferson 12-20-96
MOST DEFENSIVE REBOUNDS		Matt Needham; 13 vs. Jefferson 1-4-97
MOST REBOUNDS		Matt Needham; 20 vs. Jefferson 1-4-97
MOST STEALS		Ben Bailie; 4 vs. Hart Co. 12-6-96 Brian Hobbs; 4 vs. Jefferson 12-20-96 Matt Needham; 4 vs. Providence 11-30-96 Zeb Reid; 4 vs. Dacula 1-14-97
MOST ASSISTS		Travis Stephens; 11 vs. Franklin Co. 1-7-97
MOST BLOCKED SHOTS		Matt Needham; 5 vs. Social Circle 12-16-96 5 vs. Monroe 12-30-96
MOST POINTS IN ONE QUARTER		Zeb Reid; 21 vs. Franklin Co. 1-7-97
MOST POINTS IN ONE HALF		Zeb Reid; 26 vs. Franklin Co. 1-7-97
MOST POINTS SCORED		Zeb Reid; 40 vs. Jefferson 1-4-97

INDIVIDUAL HIGHS FOR SEASON

MOST FIELD GOALS	Zeb Reid; 210 (Total FG) Ben Bailie; 60 (3 pt. FG)
BEST FIELD GOAL PERCENTAGE*	Zeb Reid; 61% (163 of 269) 2 pts. Zeb Reid; 46% (47 of 102) 3 pts. Matt Needham; 56.9% (148 of 260) Total
MOST FREE THROWS	Matt Needham; 93
BEST FREE THROW PERCENTAGE*	Zeb Reid; 89% (73 of 82)
LEADING SCORER	Zeb Reid; 540 pts., 20.8 avg. per game
LEADING OFFENSIVE REBOUNDER	Matt Needham; 94 OR, 3.6 avg. per game
LEADING DEFENSIVE REBOUNDER	Matt Needham; 163 DR, 6.3 avg. per game
LEADING REBOUNDER	Matt Needham; 257 TR, 9.9 avg. per game
MOST STEALS	Zeb Reid; 39, 1.5 avg. per game
MOST ASSISTS	Zeb Reid; 154, 5.9 avg. per game
MOST BLOCKED SHOTS	Matt Needham; 53, 2.0 avg. per game
MOST CONSECUTIVE FREE THROWS	Zeb Reid; 22

*50 or more attempts

LOGANVILLE VS NORTH HALL AT JEFFERSON GAME # 1
 DATE 11-23-96

PLAYER	FIELD GOALS										FREE THROW				TOTAL			REBOUNDS									
	NO.	1	2	3	2	1	1	2	3	4	5	ATT	MDE	%	3 PTR	ATT	MDE	%	PTS	REG	ASST	VIOL	L.P.	BLOCKS	OFF	DEF	TOT
BRIAN HOBBS	10	3	3	2	3	6	5	83%	4	3	4	3	75%	16	1	1	1	1	1	1	1	1	1	1	3	4	
DAN BRYANT																											
ZEB REID	15	6	5	4	4	11	8	73%	1					16	2	3	1	2								2	2
TOMMY YANCEY																											
ERIK GROVER	22	2	4	1	2	6	3	50%	3	1	3	1	33%	7	6	4	1	1	1	1	1	1	1	1	4	5	
MATT MEDLIN																											
BEN BAILIE	32	4	1	0	0	5	0	0%	3	0	4	3	75%	3	1	1									3	3	
RUSS CHURCHWELL																											
MATT NEESE																											
ANDY BUELL	42																										
MATT NEEDHAM	44	6	6	3	6	12	9	75%			13	8	62%	26	1									2	4	6	10
TRAVIS STEPHENS	45	7	5	2	1	12	3	25%	4	0				6	1	2	3							2	4	6	
TROY NASWORTHY																											
BRANDON YANCEY																											
TOTALS		28	24	12	16	52	28	54%	15	3	24	15	63%	74	11	11	2	7	3	8	22	30					

First Half % 43%
 Second Half % 67%

	US	THEM
1ST QTR	9	7
2ND QTR	27	23
3RD QTR	42	43
4TH QTR	74	62

**LOGANVILLE VS
DATE**

WEST HALL
11/27/96

AT JEFFERSON

GAME #2

FIELD GOALS

FREE

PLAYER	ATT				MADE				TOTAL		%	3 PTR			THROW			%	TOTAL			REBOUNDS										
	NO.	1	2	0	1	2	0	1	2	1		2	1	2	1	2	3		ATT	MDE	ATT	MDE	PTS	REG	ASST	VIOL	L.P.	BLOCKS	OFF	DEF	TOT	
BRIAN HOBBS	10	0	2	0	1	2	1	1	2	1	50%										2	1	6	2	3			1	2	3		
DAN BRYANT																																
ZEB REID	15	6	5	6	3	11	9	82%				4	3	75%							21	1	10	1	1				3	3		
TOMMY YANCEY																																
ERIK GROVER																																
MATT MEDLIN																																
BEN BAILIE	32	3	2	2	1	5	3	60%				3	2	1	0%						8	2			2			2	2	4		
RUSS CHURCHWELL																																
MATT NEESE																																
ANDY BUELL	42		1		1	1	1	100%													2											
MATT NEEDHAM	44	3	8	1	6	11	7	64%				11	8	73%							22		4		1	1	7	8	15			
TRAVIS STEPHENS	45	6	4	4	1	10	5	50%				5	1	78%							18		3	1	4		2	5	7			
TROY NASWORTHY																																
BRANDON YANCEY																																
TOTALS		18	22	13	13	40	26	65%		8	3	25	18	72%		73	4	23	4	11	4	23	4	11	1	12	22	34				

First Half %	72%
Second Half %	59%

US	THEM
1ST QTR	20 14
2ND QTR	43 29
3RD QTR	58 49
4TH QTR	73 71

LOGANVILLE VS
DATE

JOHNSON
12/3/96

AT LOGANVILLE

GAME #4

FIELD GOALS

PLAYER	ATT		MADE		TOTAL		%		3 PTR		FREE THROW		TOTAL		%		BLOCKS		REBOUNDS					
	NO.	1	2	1	2	ATT	MDE	ATT	MDE	ATT	MDE	ATT	MDE	PTS	REG	ASST	VIOL	L.P.	OFF	DEF	TOT			
BRIAN HOBBS	10	5	1	2	1	6	3	50%	5	2				8	1	3	1	1	1	1	2	3		
DAN BRYANT	14	1			1	0	0%	1						0								0		
ZEB REID	15	5	7	1	5	12	6	50%	3	1				13		6		3			1	2	3	
TOMMY YANCEY	20	1			1	0	0%							0									0	
ERIK GROVER	22	2	4	1	1	6	2	33%	2	1				5	1		1	1			2	2	4	
MATT MEDLIN	23	1			1	0	0%							0	1								0	
BEN BAILIE	32	4	4	2	1	8	3	38%	4	1				7	1		1	1			3	1	4	
RUSS CHURCHWELL	34	1			1	0	0%							0							1	1	1	
MATT NEESE	40	1			1	1	100%				2			2	1						2	1	3	
ANDY BUELL	42	1			1	1	100%							2									0	
MATT NEEDHAM	44	7	9	2	5	16	7	44%	1		4	2		16	2		1				3	2	6	8
TRAVIS STEPHENS	45	6	4	4	1	10	5	50%	4	2	8	4		16		2		2			7	4	11	
TROY NASWORTHY	50													0									0	
BRANDON YANCEY	52										2			0				1			2		2	
TOTALS		29	35	12	16	64	28	44%	20	7	16	6	38%	69	7	11	2	9	5	21	18	39		

First Half % 41%
Second Half % 46%

	US	THEM
1ST QTR	14	14
2ND QTR	32	23
3RD QTR	48	34
4TH QTR	69	49

LOGANVILLE VS
DATE

HART CO.
12-6-96

AT HARTWELL
GAME # 5

FIELD GOALS

FREE THROW

PLAYER	ATT		MADE		TOTAL		%		3 PTR		THROW		TOTAL		%		REG ASST		VIOL		L.P.		BLOCKS		REBOUNDS		
	NO.	1	2	1	2	ATT	MDE	ATT	MDE	ATT	MDE	ATT	MDE	PTS	%	REG	ASST	VIOL	L.P.	BLOCKS	OFF	DEF	TOT	OFF	DEF	TOT	
BRIAN HOBBS	10			1		1	0	0%	1					0						2		1					0
DAN BRYANT																											
ZEB REID	15	7	7	5	3	14	8	57%	4	2	2	2	100%	20		2	1	1	5							1	1
TOMMY YANCEY																											
ERIK GROVER	22	1	4	1	2	5	3	60%	2	1	4		0%	7		3	4	4	2						2	4	6
MATT MEDLIN																											
BEN BAILIE	32	2	6	1	5	8	6	75%	5	3				15		4	1						2	1	9	10	
RUSS CHURCHWELL														0													
MATT NEESE														0													
ANDY BUELL														0													
MATT NEEDHAM	44	8	3	6	2	11	8	73%			5	1	20%	17										1	5	9	14
TRAVIS STEPHENS	45	1	1			2	0	0%	1		10	8	80%	8		1	7	3	4						3	6	9
TROY NASWORTHY																											
BRANDON YANCEY																											
TOTALS		19	22	13	12	41	25	61%	13	6	21	11	52%	67	10	10	13	10	12	10	12	3	11	29	40	40	

First Half % 68%
Second Half % 55%

US THEM

	1ST QTR	2ND QTR	3RD QTR	4TH QTR	1 OT	2 OT	FINAL
US	18	32	46	54	56	67	63
THEM	14	30	44	54	56	67	63

**LOGANVILLE VS
DATE**

JACKSON CO.
12-10-96

AT LOGANVILLE
GAME # 6

FIELD GOALS

FREE THROW

PLAYER	ATT				MADE				TOTAL	%	3 PTR			FREE			TOTAL	%	PTS	REG	ASST	VIOL	L.P.	BLOCKS	REBOUNDS				
	1	2	1	2	1	2	1	2			ATT	MDE	ATT	MDE	ATT	MDE									PTS	OFF	DEF	TOT	
BRIAN HOBBS	10	4	4	2	2	2	8	4	50%	7	4	2	2	14	100%	3				14							1	1	1
DAN BRYANT	14						0	0											0									0	
ZEB REID	15	9	9	6	5	11	18	11	61%	4	2			24		2	7	3		24							3	3	3
TOMMY YANCEY	20						0	0											0									0	
ERIK GROVER	22	1	1	1	1	1	1	1	100%	1	1			3		2	2	1	1	3							2	2	4
MATT MEDLIN	23						0	0											0									0	
BEN BAILIE	32	4	6	0	5	10	5	5	50%	5	2	1	1	13	100%					13							3	4	7
RUSS CHURCHWELL	34						0	0											0									0	
MATT NEESE	40						0	0											0									0	
ANDY BUELL	42						0	0											0									0	
MATT NEEDHAM	44	5	6	3	2	11	5	5	45%			5	4	14	80%					14							4	6	12
TRAVIS STEPHENS	45	7	6	3	1	13	4	4	31%	8	4			12		2	4			12							2	6	8
TROY NASWORTHY																													
BRANDON YANCEY																													
TOTALS	30	31	15	15	15	61	30	30	49%	25	13	8	7	80	88%	8	16	2	7	8	16	2	7	4	13	23	36		

First Half % 50%
Second Half % 48%

US THEM

	1ST QTR	2ND QTR	3RD QTR	4TH QTR
US	20	39	57	80
THEM	18	33	45	63

LOGANVILLE VS
DATE

SOCIAL CIRCLE **AT** LOGANVILLE
12/16/96 **GAME #** 8

FIELD GOALS

FREE

PLAYER	NO.		ATT		MADE		TOTAL		%		3 PTR		THROW		%		TOTAL		BLOCKS		REBOUNDS		
	1	2	1	2	1	2	ATT	MDE	ATT	MDE	ATT	MDE	ATT	MDE	PTS	REG	ASST	VIOL	L.P.	OFF	DEF	TOT	
BRIAN HOBBS	10	3	1	3	1	3	33%	1	1	2	1	33%	2	1	3	2	1	3	2	1	2	2	
DAN BRYANT	14	1	1	1	1	1	100%	1	1	1	1	100%	1	1	3	1	1	1	1	1	1	1	
ZEB REID	15	2	6	11	7	11	64%	7	11	1	2	100%	17	1	4	1	1	1	4	3	3	3	
TOMMY YANCEY	20	3	1	3	1	3	33%	1	3				2		1			1		1		1	
ERIK GROVER	22	2	1	3	2	3	67%	2	3				8		2			1		3		1	
MATT MEDLIN	23	3	1	3	1	3	33%	1	3				2		4			1		1		0	
BEN BAILIE	32	6	1	7	1	7	14%	1	7	3	1	14%	3	1	5			1		4		6	
RUSS CHURCHWELL	34	2	1	2	1	2	50%	1	2				4		4			1		4		10	
MATT NEESE	40	1	1	1	0	1	0%	0	1				0		1			1		1		1	
ANDY BUELL	42	2	2	2	0	2	0%	0	2				0		0			1		1		1	
MATT NEEDHAM	44	8	4	14	9	14	64%	9	14	3	2	100%	23	2	2	2	1	1	5	4	8	12	
TRAVIS STEPHENS	45	6	4	10	5	10	50%	5	10	2	0		10	1	6			1		1	5	6	
TROY NASWORTHY	50	1	1	1	0	1	0%	0	1	1	0		0		1			1		1		1	
BRANDON YANCEY	52	1	1	1	1	1	100%	1	1				2	1	1			1		1	2	4	
TOTALS		31	31	15	15	62	48%	30	62	13	7	13	12	12	79	14	15	9	4	10	18	29	47

First Half % 48%
Second Half % 48%

US THEM

	1ST QTR	2ND QTR	3RD QTR	4TH QTR
US	16	42	61	79
THEM	7	15	23	37

LOGANVILLE VS
DATE

JEFFERSON
12-20-96

AT JEFFERSON
GAME # 9

FIELD GOALS

FREE

PLAYER	ATT		MADE		TOTAL		%	3 PTR		THROW		%	TOTAL		REG	ASST	VIOL	L.P.	BLOCKS	REBOUNDS	
	NO.	1	2	1	2	ATT		MDE	ATT	MDE	ATT		MDE	PTS						PTS	OFF
BRIAN HOBBS	10	3	1	1	1	4	2	2	4	4	4	100%	8	4	4	4	1	1	2	3	
DAN BRYANT	14					0	0						0							0	
ZEB REID	15	11	8	4	4	19	8	2	0	4	4	100%	20	2	10					1	
TOMMY YANCEY	20					0	0						0							0	
ERIK GROVER	22	1	3	1	2	4	3					75%	6			1				2	
MATT MEDLIN	23					0	0						0							3	
BEN BAILIE	32	1	6	0	4	7	4	4	3			57%	11	1	1	1				1	
RUSS CHURCHWELL	34					0	0						0							5	
MATT NEESE	40					0	0						0					1		1	
ANDY BUELL	42					0	0						0							2	
MATT NEEDHAM	44	8	4	3	2	12	5	42%	2	0	2	100%	12	1	2	2	2	2	8	5	
TRAVIS STEPHENS	45	9	5	6	3	14	9	64%	3	2			20	2	3	1	1	1	3	10	
TROY NASWORTHY	50					0	0						0						1	0	
BRANDON YANCEY	52					0	0						0							0	
TOTALS		33	27	15	16	60	31	52%	13	5	10	100%	77	10	19	2	4	6	15	29	44

First Half % 45%
Second Half % 59%

US THEM
1ST QTR 16 10
2ND QTR 39 24
3RD QTR 58 44
4TH QTR 77 60

LOGANVILLE VS
DATE

EASTSIDE
12-27-96

AT LOGANVILLE
GAME # 10

PLAYER	FIELD GOALS						FREE THROW			TOTAL PTS	REG	ASST	VIOL	L.P.	BLOCKS	REBOUNDS							
	NO.	1	2	1	2	0	3	1	2							2	100%	5	3	4	1	OFF	DEF
BRIAN HOBBS	10	1	2	1	0	3	1	33%	2	1	2	2	100%	5	3	4	2	1	4	4			
DAN BRYANT																							
ZEB REID	15	10	7	5	3	17	8	47%	6	3	1	1	100%	20	2	8	1	3		0			
TOMMY YANCEY																							
ERIK GROVER	22	1	0			1	0	0%			7	5	71%	5						3	2	5	
MATT MEDLIN																							
BEN BAILIE	32	4	6	1	4	10	5	50%	7	2	6	5	83%	17	3	3	1	1		3	6	9	
RUSS CHURCHWELL																							
MATT NEESE	40					0	0							0				1				0	
ANDY BUELL	42					0	0							0								0	
MATT NEEDHAM	44	7	3	4	1	10	5	50%			1	1	100%	11	1	4				2	3	10	13
TRAVIS STEPHENS	45	4	3	2	3	7	5	71%	2	1	2	2	100%	13	1	3	1			1	2	5	7
TROY NASWORTHY																							
BRANDON YANCEY																							
TOTALS		27	21	13	11	48	24	50%	17	7	19	16	84%	71	10	22	3	7	4	11	27	38	

First Half % 48%
Second Half % 52%

US THEM

	1ST QTR	2ND QTR	3RD QTR	4TH QTR
US	19	35	51	71
THEM	11	22	41	53

LOGANVILLE VS
DATE

SOCIAL CIRCLE AT **LOGANVILLE**
12-28-96 **GAME #** 11

FIELD GOALS

FREE

PLAYER	ATT		MADE		TOTAL		3 PTR		THROW		%	TOTAL		REG	ASST	VIOL	L.P.	BLOCKS	REBOUNDS			
	NO.	1	2	1	2	ATT	MDE	ATT	MDE	PTS		PTS	OFF						DEF	TOT		
BRIAN HOBBS	10	1	6	1	2	7	3	4	2	2	43%	8	2	1	2					1	1	
DAN BRYANT	14					0	0			2	50%	1										0
ZEB REID	15	8	5	6	3	13	9	2	0	5	69%	22	2	5	1						2	2
TOMMY YANCEY	20					0	0					0										0
ERIK GROVER	22	1	1	1	1	2	2			2	100%	5	1	1	1						2	2
MATT MEDLIN	23					1	1	1	1		100%	3										0
BEN BAILIE	32	4	4	4	1	8	5	4	2	2	63%	13	2	3				1	3	7	10	
RUSS CHURCHWELL	34					2	1			2	50%	2										0
MATT NEESE	40					0	0					0										0
ANDY BUELL	42					1	1	1	1		100%	2							1			0
MATT NEEDHAM	44	2	4	0	1	6	1			13	17%	10	2	4						3	7	10
TRAVIS STEPHENS	45	5	6	3	4	11	7	3	1		64%	15		5	1	2				5	3	8
TROY NASWORTHY	50					0	0					0							1	1		1
BRANDON YANCEY	52					1	0	1	0		0%	0								1	1	1
TOTALS		21	31	15	15	52	30	14	6	26	58%	81	9	19	3	5	6	13	23	36		

First Half % 71%
Second Half % 48%

US THEM

1ST QTR	20	9
2ND QTR	42	25
3RD QTR	57	38
4TH QTR	81	58

**LOGANVILLE VS
DATE**

**MONROE
12-30-96**

**AT LOGANVILLE
GAME # 12**

FIELD GOALS

PLAYER	ATT						MADE		TOTAL		3 PTR			FREE THROW			TOTAL			REBOUNDS					
	NO.	1	2	3	3	3	1	2	1	2	ATT	MDE	%	ATT	MDE	%	PTS	REG	ASST	VIOL	L.P.	BLOCKS	OFF	DEF	TOT
BRIAN HOBBS	10	3	3	3	2	6	5	5	83%	5	4	3	2	2	67%	16	1	5	1	1				3	3
DAN BRYANT	14	1	1	0	0	1	0	0	0%							0	1	1		1					0
ZEB REID	15	8	5	6	4	13	10	77%	5	4	2	2	2	100%	26		3	1							0
TOMMY YANCEY	20	3	3	1	1	3	1	33%	3	1					3		1	1							0
ERIK GROVER	22	2	1	2	0	3	2	67%							4		3								2
MATT MEDLIN	23					0	0								0			2							0
BEN BAILIE	32	5	3	3	1	8	4	50%	5	1					9	1	1	1				1	1	4	5
RUSS CHURCHWELL	34	1	1	1	1	1	1	100%			2	1			3							2	1		1
MATT NEESE	40					0	0								0		1					1			0
ANDY BUELL	42					0	0								0										1
MATT NEEDHAM	44	5	5	1	3	10	4	40%			5	5			13	2	4	1	1			5	3	3	6
TRAVIS STEPHENS	45	4	3	1	2	7	3	43%	4	1	1	1			8		4					2	2	5	7
TROY NASWORTHY	50	1	1	0	0	1	0	0%							0										0
BRANDON YANCEY	52	1	1	1	1	1	1	100%							2										0
TOTALS		27	27	16	15	54	31	57%	22	11	13	11	11	85%	84	4	23	3	7	11	7	18	7	18	25

First Half % 59%
Second Half % 56%

	US	THEM
1ST QTR	27	12
2ND QTR	50	20
3RD QTR	69	30
4TH QTR	84	47

**LOGANVILLE VS
DATE**

**JEFFERSON
1-4-97**

**AT LOGANVILLE
GAME # 13**

FIELD GOALS

**FREE
THROW**

PLAYER	FIELD GOALS						FREE THROW			TOTAL PTS	REG	ASST	VIOL	L.P.	REBOUNDS				
	ATT	MADE	TOTAL	ATT	MDE	%	3 PTR ATT	MDE	%						OFF	DEF	TOT		
BRIAN HOBBS	10	5	3	0	8	38%	6	1		7	1	3	2				0		
DAN BRYANT	14				0					0							0		
ZEB REID	15	10	7	7	20	70%	12	8	4	4	100%	3	10	1		1	2		
TOMMY YANCEY	20	1	0	1	0	0%				0	2	1					0		
ERIK GROVER	22	1	5	0	3	50%	1	0	1	1	100%	1	1	1		2	3		
MATT MEDLIN	23	1	1	1	1	100%				2	1						0		
BEN BAILIE	32	2	1	1	0	33%	1	0		2	1	1	1		1	2	3		
RUSS CHURCHWELL	34	1	1	1	1	100%				2							0		
MATT NEESE	40				0					0							0		
ANDY BUELL	42				0					0							0		
MATT NEEDHAM	44	7	7	3	4	14	7	50%	6	6	100%	1	6		7	13	20		
TRAVIS STEPHENS	45	9	4	6	3	13	9	69%	4	2	1	1	7		6	6	12		
TROY NASWORTHY	50	1	1	0	1	0	0	0%	2	1	50%	1			2	2	2		
BRANDON YANCEY	52				0					0							0		
TOTALS	34	34	20	19	68	57%	24	11	14	13	93%	10	29	0	5	0	19	25	44

First Half % 59%
Second Half % 56%

US THEM

	1ST QTR	2ND QTR	3RD QTR	4TH QTR
US	24	50	69	102
THEM	9	37	53	77

LOGANVILLE VS
DATE

FRANKLIN COUNTY
1-7-97

AT CARNESVILLE
GAME # 14

FIELD GOALS

FREE

PLAYER	ATT		MADE		TOTAL		%		3 PTR		THROW		%		TOTAL		PTS		REG		ASST		VIOL		L.P.		BLOCKS		REBOUNDS	
	NO.	1	2	1	2	1	2	ATT	MDE	ATT	MDE	ATT	MDE	ATT	MDE	PTS	REG	ASST	VIOL	L.P.	BLOCKS	OFF	DEF	TOT	TOT					
BRIAN HOBBS	10	1	1	1	1	2	2	100%	1	1					5	2	6	1	1										3	3
DAN BRYANT																														
ZEB REID	15	2	15	1	10	17	11	65%	3	1	6	5	83%	28	4	1	3												0	
TOMMY YANCEY																														
ERIK GROVER	22	1	0	1	0	1	1	100%	1	1	2	2	100%	5	1	1	2											1	2	3
MATT MEDLIN																														
BEN BAILIE	32	4	4	3	3	8	6	75%	6	4	2	1	50%	17	2	1	1	2										3	5	8
RUSS CHURCHWELL	34					0	0							0														1	1	
MATT NEESE																														
ANDY BUELL																														
MATT NEEDHAM	44	2	3	1	2	5	3	60%			8	7	88%	13			2											1	9	10
TRAVIS STEPHENS	45	7	5	2	2	12	4	33%	2	0	4	4	100%	12			11											4	4	8
TROY NASWORTHY																														
BRANDON YANCEY																														
TOTALS		17	28	9	18	45	27	60%	13	7	22	19	86%	80	4	25	3	8	1	9	24	33								

First Half % 53%
Second Half % 64%

US THEM

	1ST QTR	2ND QTR	3RD QTR	4TH QTR
US	9	28	51	80
THEM	11	29	47	66

LOGANVILLE VS
DATE

SOCIAL CIRCLE
1/25/97

AT SOCIAL CIRCLE
GAME # 20

FIELD GOALS

FREE

PLAYER	ATT				MADE				TOTAL				3 PTR				THROW				TOTAL				REBOUNDS				
	NO.	1	2	3	1	2	3	4	1	2	3	4	1	2	3	4	1	2	3	4	PTS	REG	ASST	VIOL	L.P.	BLOCKS	OFF	DEF	TOT
BRIAN HOBBS	10	6	8	4	6	14	10	10	71%	5	3	1	1	1	100%	24	2	5	2	2	24	2	5	2	2	1	1	1	1
DAN BRYANT	14	1	1	0	0	1	0	0	0%	1	0	0	0	0	0%	0	0	0	0	0	0	0	0	0	0	0	0	0	0
ZEB REID	15	8	12	4	8	20	12	12	60%	3	1	7	7	100%	32	1	9	1	1	1	32	1	9	1	1	1	3	4	4
TOMMY YANCEY	20					0	0	0							0	0	0	0	0	0	0	0	0	0	0	0	0	0	0
ERIK GROVER	22	3	2	3	2	3	2	2	67%			2	2	0%	4	1	1	1	1	1	4	1	1	1	1	1	3	4	4
MATT MEDLIN	23	2	0	2	0	2	0	0	0%	1	0	0	0	0	0%	0	0	0	0	0	0	0	0	0	0	0	0	0	0
BEN BAILIE	32	5	5	3	3	10	6	6	60%	4	1	1	1	100%	13	0	0	0	0	0	13	0	0	0	0	0	0	0	0
RUSS CHURCHWELL	34					0	0	0	ERR						ERR	0	0	0	0	0	0	0	0	0	0	0	0	0	0
MATT NEESE	40					0	0	0	ERR						ERR	0	0	0	0	0	0	0	0	0	0	0	0	0	0
ANDY BUELL	42	1	0	1	0	1	0	0	0%						0	0	0	0	0	0	0	0	0	0	0	0	0	0	0
MATT NEEDHAM	44	3	4	1	2	7	3	3	43%			4	3	75%	9	2	2	1	1	1	9	2	2	1	1	1	3	4	4
TRAVIS STEPHENS	45	2	1	1	2	2	1	1	50%	1	0	1	0	0%	2	2	1	1	1	1	2	2	1	1	1	1	7	8	8
TROY NASWORTHY	50					0	0	0							0	0	0	0	0	0	0	0	0	0	0	0	0	0	0
BRANDON YANCEY	52					0	0	0							0	0	0	0	0	0	0	0	0	0	0	0	0	0	0
TOTALS		25	35	13	21	60	34	34	57%	15	5	15	11	73%	84	8	18	2	5	84	8	18	2	5	10	32	42	42	

First Half % 52%
Second Half % 60%

US THEM

	1ST QTR	2ND QTR	3RD QTR	4TH QTR
US	10	32	56	84
THEM	11	22	42	54

**LOGANVILLE VS
DATE**

GAINESVILLE
1/28/97

AT LOGANVILLE
GAME # 21

FIELD GOALS

FREE

PLAYER	ATT				MADE				TOTAL				%	3 PTR ATT	3 PTR MDE	%	THROW ATT	THROW MDE	%	TOTAL				REBOUNDS						
	NO.	1	2	1	1	2	1	2	1	2	1	2								1	2	1	2	1	2	1	2	PTS	REG	ASST
BRIAN HOBBS	10	2	1	1	1	0	3	1	33%	2	1	33%	1	3	1	3	3	1	3	2	1	1	1	1	1	1	1	1	1	
DAN BRYANT																														
ZEB REID	15	5	8	3	5	13	8	62%	7	4	2	100%	2	2	1	3	22	1	1	3	0									
TOMMY YANCEY																														
ERIK GROVER	22					0	0										0	1			0									
MATT MEDLIN																														
BEN BAILIE	32	1	9	0	4	10	4	40%	7	3						11	3				5									
RUSS CHURCHWELL																														
MATT NEESE																														
ANDY BUELL	42	2	1	1	2	1	1	50%								2														
MATT NEEDHAM	44	4	1	1	1	5	2	40%	8	5	63%	9	4	1	1	2	1	4	1	3	0									
TRAVIS STEPHENS	45	5	2	2	1	7	3	43%	2	2	100%	8	5	1	1	1	4	5	1	1	5									
TROY NASWORTHY																														
BRANDON YANCEY																														
MILOS PARAVINJA	30	6	5	5	1	11	6	55%	5	2	1	100%	15	2	1	3	15	2	1	3	8									
TOTALS		23	28	12	13	51	25	49%	21	10	13	10	77%	70	1	19	3	10	6	8	20	28								

First Half %	52%
Second Half %	46%

US	THEM
1ST QTR	14 23
2ND QTR	31 43
3RD QTR	49 66
4TH QTR	70 87

LOGANVILLE VS
DATE

FRANKLIN COUNTY
1/31/97

AT LOGANVILLE
GAME # 22

FIELD GOALS

FREE THROW

PLAYER	ATT			MADE			TOTAL			3 PTR			%			TOTAL			REBOUNDS			
	NO.	1	2	1	2	3	ATT	MDE	%	ATT	MDE	%	PTS	REG	ASST	VIOL	L.P.	BLOCKS	OFF	DEF	TOT	
BRIAN HOBBS	10	2	1	0	1	3	1	33%	3	1	33%	4	2	4	1						3	3
DAN BRYANT	14	1	1	0	1	0	0	0%				0										0
ZEB REID	15	8	3	6	1	11	7	64%	5	3	60%	20	5	5							1	1
TOMMY YANCEY	20	1	1	0	1	0	0	0%	1	0	0%	1	1	1								0
ERIK GROVER	22	1	2	0	2	3	2	67%				4	1	3								0
MATT MEDLIN	23	1	1	0	1	0	0	0%	1	0	0%	1	3	1	1							0
BEN BAILIE	32	8	5	5	2	13	7	54%	10	6	60%	20	1	2	1			1	3	5	8	
RUSS CHURCHWELL	34	1	1	0	1	0	0	0%	2	2	100%	2							2		2	
MATT NEESE	40	1	1	0	1	0	0	0%				0									1	1
ANDY BUELL	42					0	0		2	1	50%	1	1	1							1	1
MATT NEEDHAM	44	4	2	2	2	6	4	67%				11	2	2				2	5	4	9	
TRAVIS STEPHENS	45	2	2	2	2	4	4	100%	1	1	100%	10	2	4							1	4
TROY NASWORTHY	50		3	1	3	1	1	33%	2	1		3										0
BRANDON YANCEY	52					0	0					1										0
MILOS PARAVINJA	30	4	6	3	3	10	6	60%	1	0		13	4	1				1	2	4	6	
TOTALS		29	29	18	14	58	32	55%	24	12	23	15	13	24	2	2	4	14	22	36		

First Half % 62%
Second Half % 48%

US THEM

	1ST QTR	2ND QTR	3RD QTR	4TH QTR
US	24	46	73	91
THEM	12	27	44	64

**LOGANVILLE VS
DATE**

**EAST HALL AT EAST HALL
2/4/97 GAME # 23**

FIELD GOALS

FREE THROW

PLAYER	ATT		MADE		TOTAL		%	3 PTR		%	TOTAL		%	REG ASST		L.P.	BLOCKS		REBOUNDS		
	NO.	1	2	1	2	ATT		MDE	ATT		MDE	PTS		REG	ASST		VIOL	OFF	DEF	TOT	
BRIAN HOBBS	10	2	1	1	0	3	1	33%	2	0	2	1	50%	4	1	1	1	1	1	1	
DAN BRYANT																					
ZEB REID	15	5	7	2	4	12	6	50%	3	2				2	3	1	7			0	
TOMMY YANCEY																					
ERIK GROVER	22					0	0													0	
MATT MEDLIN																					
BEN BAILIE	32	7	4	2	1	11	3	27%	6	1				7	3					6	
RUSS CHURCHWELL																					
MATT NEESE																					
ANDY BUELL																					
MATT NEEDHAM	44	4	7	2	6	11	8	73%			2	2	100%	1	3		2	3	7	10	
TRAVIS STEPHENS	45	5	3	1	0	8	1	13%			4	4	100%	2	8	2		4	3	7	
TROY NASWORTHY																					
BRANDON YANCEY																					
MILOS PARAVINJA	30	6	5	2	5	11	7	64%	2	1				2	1	2	1	2	4	6	
TOTALS		29	27	10	16	56	26	46%	13	4	8	7	88%	19	10	3	12	3	10	20	30

First Half %	34%
Second Half %	59%

US	THEM
1ST QTR	16 21
2ND QTR	22 34
3RD QTR	43 38
4TH QTR	63 61

LOGANVILLE VS
DATE

DACULA AT DACULA
2--7-97 GAME # 24

FIELD GOALS

FREE THROW

PLAYER	ATT				MADE				TOTAL				%	3 PTR ATT	3 PTR MDE	%	TOTAL PTS	REG	ASST	VIOL	L.P.	BLOCKS			REBOUNDS		
	1	2	3	4	1	2	3	4	ATT	MDE	ATT	MDE										OFF	DEF	TOT			
BRIAN HOBBS	10	3	4	0	4	0	4	7	4	4	57%	3	1	9	3	3	1	1	1	3	4						
DAN BRYANT	14							0	0					0	1	1											
ZEB REID	15	6	9	2	5	15	7	47%	6	2	47%			16	1	8											
TOMMY YANCEY	20							0						0													
ERIK GROVER	22	1	1	0	2	1	50%						2														
MATT MEDLIN	23							0						0	1	1											
BEN BAILIE	32	2	6	1	1	8	25%	2	2	25%	5	0	6	3	3	1	1										
RUSS CHURCHWELL																											
MATT NEESE	40													0													
ANDY BUELL	42	1			0	1	0%						0														
MATT NEEDHAM	44	8	2	5	1	10	60%	6	2	60%			13	4	3	1											
TRAVIS STEPHENS	45	1			1	1	100%	1	1	100%	1	1	8	3	9		1	2	2	4							
TROY NASWORTHY	50				2	2	100%	2	2	100%	1	1	5														
BRANDON YANCEY	52							0						0													
MILOS PARAVINJA	30	10	8	4	4	18	44%	8	2	44%	2	0	21	3	1	2	2	1	2	3							
TOTALS		31	33	14	17	64	48%	31	18	48%	5	16	80	17	29	4	3	4	14	24	38						

First Half % 45%
Second Half % 52%

	US	THEM
1ST QTR	18	16
2ND QTR	36	28
3RD QTR	56	39
4TH QTR	80	48

**LOGANVILLE VS
DATE**

JACKSON COUNTY
2-13-97

AT JACKSON CO.
GAME # 25

1ST ROUND-REGION TOURNAMENT

FIELD GOALS

**FREE
THROW**

PLAYER	ATT		MADE			TOTAL		%	3 PTR ATT	3 PTR MDE	%	TOTAL		REG	ASST	VIOL	L.P.	BLOCKS	REBOUNDS		
	1	2	1	2	3	4	PTS					REB	DEF						TOT		
BRIAN HOBBS	10	1	5	1	3	6	4	67%	2	0		8	2	2	1	2			2	2	
DAN BRYANT																					
ZEB REID	15	4	3	2	2	7	4	57%	2	0	90%	17	2	6		2			3	1	4
TOMMY YANCEY																					
ERIK GROVER	22	2	0	0	0	2	0	0%				0						1	2	2	4
MATT MEDLIN																					
BEN BAILIE	32	8	5	5	0	13	5	38%	10	4	100%	16	1	1		2			2	1	3
RUSS CHURCHWELL	34					0	0					0									0
MATT NEESE	40					0	0					0									0
ANDY BUELL																					
MATT NEEDHAM	44	4	1	1	0	2	1	25%	4	3	75%	5	2	1		2			1	4	5
TRAVIS STEPHENS	45	5	2	2	2	7	4	57%	3	1		9	2	6				1	2	2	2
TROY NASWORTHY																					
BRANDON YANCEY																					
MILOS PARAVINJA	30	3	5	3	3	8	6	75%				14	1		1				1	4	5
TOTALS		27	20	14	10	47	24	51%	17	5	16	69	10	16	2	8	2	11	14	25	

First Half %	52%
Second Half %	50%

US THEM

1ST QTR	17	11
2ND QTR	37	24
3RD QTR	46	38
4TH QTR	69	54

BRIAN HOBBS

10

FIELD GOALS

FREE THROW

Opponent	ATT		MADE		TOTAL		%	3 PTR		THROW		%	TOTAL		REBOUNDS							
	1	2	1	2	ATT	MDE		ATT	MDE	ATT	MDE		PTS	REG	ASST	VIOL	L.P.	BLOCKS	OFF	DEF	TOT	
NORTH HALL	10	3	3	2	3	6	5	83%	4	3	4	3	75%	16	1	1	1	1	3	4		
WEST HALL	10	0	2	0	1	2	1	50%						2	1	6	2	3	1	2		
PROVIDENCE	10	2	0	1	0	2	1	50%	2	1	4	4	100%	7	2	5	4		2	2		
JOHNSON CO (H)	10	5	1	2	1	6	3	50%	5	2				8	1	3	1	1	1	2		
HART CO (A)	10		1			1	0	0%	1					0			2	1		0		
JACKSON CO (H)	10	4	4	2	2	8	4	50%	7	4	2	2	100%	14	3				1	1		
GAINESVILLE (A)	10	2	3		1	5	1	20%	4	1				3	2	2	1	3		0		
SOCIAL CIRCLE (H)	10	3	3	1	1	3	1	33%	2	1				3	2	1	3			2		
JEFFERSON (A)	10	3	1	1	1	4	2	50%	2		4	4	100%	8	4	4		1	1	2		
EASTSIDE	10	1	2	1	0	3	1	33%	2	1	2	2	100%	5	3	4	2	1	4	4		
SOCIAL CIRCLE	10	1	6	1	2	7	3	43%	4	2				8	2	1			1	1		
MONROE	10	3	3	3	2	6	5	83%	5	4	3	2	67%	16	1	5	1		3	3		
JEFFERSON (H)	10	5	3	3	0	8	3	38%	6	1				7	1	3				0		
FRANKLIN CO (A)	10	1	1	1	1	2	2	100%	1	1				3	2	6	1		3	3		
EAST HALL (H)	10	2	4	1	0	6	1	17%	3	1				5	2	1	3		1	2		
DACULA (H)	10	3	5	1	1	8	2	25%	5	1				3	1	1	1	1	2	2		
JOHNSON (A)	10	2	1	1	1	3	1	33%	3	1	4	4	100%	7	4	2	1			0		
HART CO (H)	10	2	4	0	4	6	4	67%	2	1	7	7	100%	16	3	3	1	1	2	3		
JACKSON CO (A)	10	3	3	0	3	6	3	50%	2	1				7	5	5	1	1	1	2		
SOCIAL CIRCLE (A)	10	6	8	4	6	14	10	71%	5	3	1	1	100%	24	2	5	2	1	1	1		
GAINESVILLE (H)	10	2	1	1	0	3	1	33%	2	1				3	1	3	2		1	1		
FRANKLIN CO (H)	10	2	1	0	1	3	1	33%	3	1	2	1	50%	4	2	4	1		3	3		
EAST HALL (A)	10	2	1	1	0	3	1	33%	2	0	2	1	50%	3	4	4	1	1	1	1		
DACULA (A)	10	3	4	0	4	7	4	57%	3	1				9	3	3	1	1	3	4		
JACKSON CO (A)	10	1	5	1	3	6	4	67%	2	0				8	2	2	1	2	2	2		
EAST HALL (A)	10		3		0	3	0	0%	1	0	2	0	0%	0	1	2	1	1	1	1		
TOTALS	26	58	73	26	38	131	64	49%	78	32	37	31	84%	191	38	79	15	37	6	12	39	51

DAN BRYANT
14

Opponent	FIELD GOALS										FREE THROW			TOTAL			REBOUNDS						
	ATT		MADE		TOTAL		%		3 PTR		ATT		%		PTS		BLOCKS		DEF		TOT		
	1	2	1	2	1	2	1	2	1	2	1	2	1	2	1	2	1	2	1	2	1	2	
NORTH HALL																							
WEST HALL																							
PROVIDENCE																							
JOHNSON CO (H)	14		1		1	0	0	0%		1													0
HART CO (A)																							
JACKSON CO (H)	14				0	0																	0
GAINESVILLE (A)																							
SOCIAL CIRCLE (H)	14	1	1	1	1	1	100%		1	1												1	
JEFFERSON (A)	14				0	0																	0
EASTSIDE																							
SOCIAL CIRCLE	14				0	0				2	1		50%										0
MONROE	14	1		0	1	0	0%																0
JEFFERSON (H)	14				0	0																	0
FRANKLIN CO (A)																							
EAST HALL (H)																							
DACULA (H)	14	1			1	0	0%		1														0
JOHNSON (A)																							
HART CO (H)	14				0	0																	0
JACKSON CO (A)																							
SOCIAL CIRCLE (A)	14	1		0	1	0	0%		1	0													1
GAINESVILLE (H)																							
FRANKLIN CO (H)	14	1		0	1	0	0%																0
EAST HALL (A)																							
DACULA (A)	14				0	0																	0
JACKSON CO (A)																							
EAST HALL (A)																							
TOTALS	12	0	6	0	1	6	17%		4	1	2	1	50%		4	1	3	2	2	0	2	0	

PPG 0.3

RPG 0.2

ZEB REID

15

FIELD GOALS

FREE THROW

Opponent	ATT		MADE		TOTAL		%	3 PTR		THROW		%	TOTAL		PTS	REG	ASST	VIOL	L.P.	BLOCKS		REBOUNDS	
	1	2	1	2	ATT	MDE		ATT	MDE	ATT	MDE		OFF	DEF						TOT			
NORTH HALL	15	6	5	4	4	11	8	73%	1		4	3	75%	16	2	3	1	2	1	2	2	2	2
WEST HALL	15	6	5	6	3	11	9	82%			4	3	75%	21	1	10	1	1	1			3	3
PROVIDENCE	15	9	4	5	1	13	6	46%	1	1	2	2	100%	15	1	8	3	2					0
JOHNSON CO (H)	15	5	7	1	5	12	6	50%	3	1			13		6	6		3	3			1	2
HART CO (A)	15	7	7	5	3	14	8	57%	4	2	2	2	100%	20	2	2	1	5	5			1	1
JACKSON CO (H)	15	9	9	6	5	18	11	61%	4	2			24	2	7	3	3	3				3	3
GAINESVILLE (A)	15	6	12	4	3	18	7	39%	5	3	4	4	100%	21	3	5	1	1	1			3	3
SOCIAL CIRCLE (H)	15	9	2	6	1	11	7	64%	1	1	2	2	100%	17	1	4	1	1				3	3
JEFFERSON (A)	15	11	8	4	4	19	8	42%	2	0	4	4	100%	20	2	10						1	1
EASTSIDE	15	10	7	5	3	17	8	47%	6	3	1	1	100%	20	2	8	1	3	3				0
SOCIAL CIRCLE	15	8	5	6	3	13	9	69%	2	0	5	4	80%	22	2	5	1					2	2
MONROE	15	8	5	6	4	13	10	77%	5	4	2	2	100%	26		3	1						0
JEFFERSON (H)	15	10	10	7	7	20	14	70%	12	8	4	4	100%	40	3	10		1	1			1	1
FRANKLIN CO (A)	15	2	15	1	10	17	11	65%	3	1	6	5	83%	28		4	1	3	3				0
EAST HALL (H)	15	4	10	2	7	14	9	64%	2	2	9	8	89%	28	1	7	2	3				3	3
DACULA (H)	15	12	6	6	4	18	10	56%	6	2	2	2	100%	24	4	5		1	1			1	1
JOHNSON (A)	15	4	7	3	3	11	6	55%	2				12	2	6	1	7	7				1	1
HART CO (H)	15	6	11	2	8	17	10	59%	7	3	2	2	100%	25	1	9		1	1			1	1
JACKSON CO (A)	15	7	4	3	1	11	4	36%	4	1	2	2	100%	11	1	4		1	1			2	2
SOCIAL CIRCLE (A)	15	8	12	4	8	20	12	60%	3	1	7	7	100%	32	1	9		1	1			1	3
GAINESVILLE (H)	15	5	8	3	5	13	8	62%	7	4	2	2	100%	22		1	1	3					0
FRANKLIN CO (H)	15	8	3	6	1	11	7	64%	5	3	4	3	75%	20		5		5				1	1
EAST HALL (A)	15	5	7	2	4	12	6	50%	3	2			14	2	3	1	7						0
DACULA (A)	15	6	9	2	5	15	7	47%	6	2			16	1	8							1	1
JACKSON CO (A)	15	4	3	2	2	7	4	57%	2	0	10	9	90%	17	2	6		2				3	1
EAST HALL (A)	15	4	11	0	5	15	5	33%	6	1	8	5	63%	16	3	7	1	5	5	1	1	3	3
TOTALS	26	179	192	101	109	371	210	57%	102	47	82	73	89%	540	39	154	18	56	56	1	9	37	46

PPG 20.8

RPG 1.8

TOMMY YANCEY
20

Opponent	FIELD GOALS										FREE THROW				TOTAL				REBOUNDS		
	ATT		MADE		TOTAL		3 PTR		ATT		THROW		PTS		BLOCKS		TOT				
	1	2	1	2	ATT	MDE	%	ATT	MDE	ATT	MDE	%	REG	ASST	VIOL	L.P.	OFF	DEF	TOT		
NORTH HALL																					
WEST HALL																					
PROVIDENCE																					
JOHNSON CO (H)	20		1		1	0	0%						0							0	
HART CO (A)																					
JACKSON CO (H)	20				0	0							0							0	
GAINESVILLE (A)																					
SOCIAL CIRCLE (H)	20		3		3	1	33%						2		1				1	1	
JEFFERSON (A)	20				0	0							0							0	
EASTSIDE																					
SOCIAL CIRCLE	20				0	0							0							0	
MONROE	20		3		3	1	33%	3	1				3		1					0	
JEFFERSON (H)	20		1		0	1	0%						0		1					0	
FRANKLIN CO (A)																					
EAST HALL (H)																					
DACULA (H)	20				0	0							0							0	
JOHNSON (A)																					
HART CO (H)	20				0	0							0		1					0	
JACKSON CO (A)																					
SOCIAL CIRCLE (A)	20				0	0							0							0	
GAINESVILLE (H)																					
FRANKLIN CO (H)	20		1		0	1	0%	1	0	2	1	50%	1		1					0	
EAST HALL (A)																					
DACULA (A)	20				0	0							0						1	1	
JACKSON CO (A)																					
EAST HALL (A)																					
TOTALS	12	0	9	0	2	9	22%	4	1	3	1	33%	6	3	3	2	0	0	1	1	2

PPG 0.5

RPG 0.2

ERIK GROVER

22

FIELD GOALS

FREE

Opponent	ATT		MADE		TOTAL		%	3 PTR		THROW		%	TOTAL		REG	ASST	VIOL	L.P.	BLOCKS	REBOUNDS		
	1	2	1	2	ATT	MDE		ATT	MDE	ATT	MDE		PTS	PTS						OFF	DEF	TOT
NORTH HALL	22	2	4	1	2	6	3	50%	3	3	1	33%	7	6	4	4	1	1	1	1	4	5
WEST HALL																						
PROVIDENCE																						
JOHNSON CO (H)	22	2	4	1	1	6	2	33%	2	1			5	1						1	2	4
HART CO (A)	22	1	4	1	2	5	3	60%	2	1	4	0%	7	3	4	4	2	1	2	2	4	6
JACKSON CO (H)	22	1	1	1	1	1	1	100%	1	1			3	2	2	1	1	1	1	2	2	4
GAINESVILLE (A)	22	2	2	1	1	2	1	50%	1	1		0%	2	2	2	1	1	1	3	1	1	1
SOCIAL CIRCLE (H)	22	2	1	1	1	3	2	67%		5	4	80%	8	2			1	1	3	1	1	1
JEFFERSON (A)	22	1	3	1	2	4	3	75%					6			1				2	3	5
EASTSIDE	22	1	0			1	0	0%		7	5	71%	5							3	2	5
SOCIAL CIRCLE	22	1	1	1	1	2	2	100%		2	1	50%	5	1	1		1			3	2	5
MONROE	22	2	1	2	0	3	2	67%					4		3						2	2
JEFFERSON (H)	22	1	5	0	3	6	3	50%	1	0	1	100%	7		1		1			2	3	5
FRANKLIN CO (A)	22	1	0	1	0	1	1	100%	1	1	2	100%	5		1		2			1	2	3
EAST HALL (H)	22	1	1	1	1	1	1	100%		2	1	50%	3		1		2			2	0	0
DACULA (H)	22	1	1	1	1	1	1	100%					2	2	2					2	2	4
JOHNSON (A)	22	2	1	1	3	1	3	33%	1				2		1		1			2	1	3
HART CO (H)	22	1	1	0	0	2	0	0%					0									0
JACKSON CO (A)	22					0	0						0						1			0
SOCIAL CIRCLE (A)	22		3	2	3	2	2	67%		2		0%	4	1	1	1	1			1	3	4
GAINESVILLE (H)	22					0	0						0									0
FRANKLIN CO (H)	22	1	2	0	2	3	2	67%					4	1	3							0
EAST HALL (A)	22					0	0						0									0
DACULA (A)	22	1	1	1	0	2	1	50%					2								2	4
JACKSON CO (A)	22	2	2	0	2	0	0	0%					0						1	2	2	4
EAST HALL (A)	22	1	1	0	0	2	0	0%		2	2	100%	2			1				2	2	4
TOTALS	24	24	35	13	18	59	31	53%	12	4	31	17	55%	83	19	27	10	14	7	28	38	66

PPG 3.5

RPG 2.8

MILOS PARAVINJA
30

Opponent	FIELD GOALS						3 PTR			FREE THROW			TOTAL			REBOUNDS							
	ATT	MADE	1	2	ATT	TOTAL	ATT	MDE	%	ATT	MDE	%	PTS	REG	ASST	VIOL	L.P.	BLOCKS	OFF	DEF	TOT		
NORTH HALL																							
WEST HALL																							
PROVIDENCE																							
JOHNSON CO (H)																							
HART CO (A)																							
JACKSON CO (H)																							
GAINESVILLE (A)																							
SOCIAL CIRCLE (H)																							
JEFFERSON (A)																							
EASTSIDE																							
SOCIAL CIRCLE																							
MONROE																							
JEFFERSON (H)																							
FRANKLIN CO (A)																							
EAST HALL (H)																							
DACULA (H)																							
JOHNSON (A)																							
HART CO (H)																							
JACKSON CO (A)																							
SOCIAL CIRCLE (A)																							
GAINESVILLE (H)	30	6	5	5	1	11	6	55%	5	2	1	1	100%	15	2	1	3	3	3	5	8		
FRANKLIN CO (H)	30	4	6	3	3	10	6	60%	1	0	3	1	33%	13	4	1		1	2	4	6		
EAST HALL (A)	30	6	5	2	5	11	7	64%	2	1				15	2	1	2	1	2	4	6		
DACULA (A)	30	10	8	4	4	18	8	44%	2	0	6	5	83%	21	3	1	2	2	1	2	3		
JACKSON CO (A)	30	3	5	3	3	8	6	75%			3	2	67%	14	1		1		1	4	5		
EAST HALL (A)	30	6	3	2	1	9	3	33%	2	0	6	3	50%	9	2	1	1		1	3	4		
TOTALS	6	35	32	19	17	67	36	54%	12	3	19	12	63%	87	6	10	5	8	7	10	22	32	

PPG 14.5

RPG 5.3

MATT MEDLIN
23

Opponent	FIELD GOALS										FREE THROW			TOTAL			REBOUNDS						
	ATT		MADE		TOTAL		3 PTR		ATT		MDE		%		PTS		BLOCKS		DEF		TOT		
	1	2	1	2	1	2	1	2	1	2	1	2	1	2	1	2	1	2	1	2	1	2	
NORTH HALL																							
WEST HALL																							
PROVIDENCE																							
JOHNSON CO (H)	23		1		1	0					0%												0
HART CO (A)																							
JACKSON CO (H)	23				0	0																	
GAINESVILLE (A)																							
SOCIAL CIRCLE (H)	23		3		1	3	1				33%												0
JEFFERSON (A)	23				0	0																	0
EASTSIDE																							
SOCIAL CIRCLE	23		1		1	1	1				100%												0
MONROE	23				0	0																	0
JEFFERSON (H)	23		1		1	1	1				100%												0
FRANKLIN CO (A)																							
EAST HALL (H)																							
DACULA (H)	23				0	0																	0
JOHNSON (A)																							
HART CO (H)	23				0	0																	0
JACKSON CO (A)																							
SOCIAL CIRCLE (A)	23		2		0	2	0				0%												0
GAINESVILLE (H)																							
FRANKLIN CO (H)	23		1		0	1	0				0%												0
EAST HALL (A)																							
DACULA (A)	23				0	0																	0
JACKSON CO (A)																							
EAST HALL (A)																							
TOTALS	12	0	9	0	3	9	3	33%	3	1	2	1	50%	8	9	1	2	5	1	0	0	0	

PPG 0.7

RPG 0.0

BEN BAILIE
32

Opponent	FIELD GOALS											FREE THROW			TOTAL			REBOUNDS				
	ATT		MADE		TOTAL		3PTR		THROW		TOTAL		PTS		BLOCKS		OFF		DEF		TOT	
	1	2	1	2	1	2	ATT	MDE	%	ATT	MDE	%	PTS	REG	ASST	VIOL	L.P.	BLOCKS	OFF	DEF	TOT	
NORTH HALL	32	4	1	0	0	5	0	0%	3	0	0%	3	1	1	1						3	3
WEST HALL	32	3	2	2	1	5	3	60%	3	2	60%	8	2				2				2	2
PROVIDENCE	32	1	7	0	2	8	2	25%	3	1	25%	7	2	1			2				4	7
JOHNSON CO (H)	32	4	4	2	1	8	3	38%	4	1		7	1				1				3	1
HART CO (A)	32	2	6	1	5	8	6	75%	5	3		15	4	1			2				1	9
JACKSON CO (H)	32	4	6	0	5	10	5	50%	5	2		13									3	4
GAINESVILLE (A)	32	6	5	1	3	11	4	36%	9	3		11									4	2
SOCIAL CIRCLE (H)	32	6	1	1		7	1	14%	3	1		5		1			1				4	6
JEFFERSON (A)	32	1	6	0	4	7	4	57%	4	3		11	1								1	5
EASTSIDE	32	4	6	1	4	10	5	50%	7	2		17	3	3	1						3	6
SOCIAL CIRCLE	32	4	4	4	1	8	5	63%	4	2		13	2	3							3	7
MONROE	32	5	3	3	1	8	4	50%	5	1		9	1	1							1	4
JEFFERSON (H)	32	2	1	1	0	3	1	33%	1	0		2	1	1							1	5
FRANKLIN CO (A)	32	4	4	3	3	8	6	75%	6	4		17	2	1	1						1	2
EAST HALL (H)	32	4	5	2	4	9	6	67%	5	2		17	1	3							3	5
DACULA (H)	32	6	5	2	4	11	6	55%	8	4		16	1	4							2	7
JOHNSON (A)	32	4	9	1	7	13	8	62%	8	5		24		1							3	4
HART CO (H)	32	7	3	3	1	10	4	40%	7	3		11	1	2	1						4	5
JACKSON CO (A)	32	6	4	4	2	10	6	60%	6	3		17		1							1	3
SOCIAL CIRCLE (A)	32	5	5	3	3	10	6	60%	4	1		13									4	7
GAINESVILLE (H)	32	1	9	0	4	10	4	40%	7	3		11		3							5	5
FRANKLIN CO (H)	32	8	5	5	2	13	7	54%	10	6		20	1	2							3	5
EAST HALL (A)	32	7	4	2	1	11	3	27%	6	1		7	3								6	6
DACULA (A)	32	2	6	1	1	8	2	25%	5	0		6	3	3	1						2	5
JACKSON CO (A)	32	8	5	5	0	13	5	38%	10	4		16	1	1							2	1
EAST HALL (A)	32	4	5	1	2	9	3	33%	7	3		10	2	1							1	1
TOTALS	26	112	121	48	61	233	109	47%	145	60	35	28	306	33	34	6	16	10	55	115	170	

PPG 11.8

RPG 6.5

RUSS CHURCHWELL

34

FIELD GOALS

FREE

Opponent	ATT		MADE		TOTAL		%	3 PTR	ATT	MDE	ATT	MDE	%	TOTAL	PTS	REG	ASST	VIOL	L.P.	BLOCKS	REBOUNDS			
	1	2	1	2	ATT	MDE															ATT	MDE	OFF	DEF
NORTH HALL																								
WEST HALL																								
PROVIDENCE	34				0	0								0										0
JOHNSON CO (H)	34	1			1	0	0%							0								1		1
HART CO (A)																								
JACKSON CO (H)	34				0	0								0									1	1
GAINESVILLE (A)																								
SOCIAL CIRCLE (H)	34	2	1	2	1	1	50%		2	2	2	2	100%	4								4		4
JEFFERSON (A)	34				0	0								0										0
EASTSIDE																								
SOCIAL CIRCLE	34	2	1	2	1	1	50%							2										0
MONROE	34	1	1	1	1	1	100%		2	1	2	1	50%	3						2		1		1
JEFFERSON (H)	34	1	1	1	1	1	100%							2										0
FRANKLIN CO (A)	34				0	0								0									1	1
EAST HALL (H)																								
DACULA (H)	34	1	2	1	3	1	33%							2		1							1	1
JOHNSON (A)	34				0	0								0										0
HART CO (H)	34				0	0								0										0
JACKSON CO (A)																								
SOCIAL CIRCLE (A)	34				0	0								0									1	1
GAINESVILLE (H)																								
FRANKLIN CO (H)	34	1	0	1	0	0	0%		2	2	2	2	100%	2								2		2
EAST HALL (A)																								
DACULA (A)																								
JACKSON CO (A)	34				0	0								0										0
EAST HALL (A)	34				0	0			2	0	2	0	0%	0								1	1	2
TOTALS	16	1	10	0	5	11	5	45%	0	0	8	5	63%	15	1	0	0	0	0	0	2	9	5	14

PPG 0.9

RPG 0.9

MATT NEESE

40

FIELD GOALS

FREE THROW

Opponent	ATT		MADE		TOTAL		%	3 PTR	ATT	MDE	%	TOTAL		%	REG	ASST	VIOL	L.P.	BLOCKS	REBOUNDS				
	1	2	1	2	ATT	MDE						PTS	REB							DEF	TOT			
NORTH HALL																								
WEST HALL																								
PROVIDENCE					0	0							2	2	100%								0	
JOHNSON CO (H)		1		1	1	1	100%						2	2	0%	1						2	1	3
HART CO (A)																								
JACKSON CO (H)					0	0																		
GAINESVILLE (A)					0	0																		
SOCIAL CIRCLE (H)		1			1	0	0%									1						1	1	
JEFFERSON (A)					0	0																1	1	
EASTSIDE					0	0																		
SOCIAL CIRCLE					0	0																		
MONROE					0	0											1					1	0	
JEFFERSON (H)					0	0																		
FRANKLIN CO (A)					0	0																		
EAST HALL (H)																								
DACULA (H)					0	0																	1	
JOHNSON (A)																								
HART CO (H)					0	0																		
JACKSON CO (A)																								
SOCIAL CIRCLE (A)					0	0																		
GAINESVILLE (H)																							1	
FRANKLIN CO (H)		1			0	1	0	0%															1	
EAST HALL (A)																								
DACULA (A)					0	0																	1	
JACKSON CO (A)					0	0																	1	
EAST HALL (A)					0	0																	0	
TOTALS	17	0	3	0	1	3	33%	0	0	6	2	33%	4	1	2	0	2	1	1	2	8	10		

PPG 0.2

RPG 0.6

ANDY BUELL
42

Opponent	FIELD GOALS										FREE THROW			TOTAL			REBOUNDS						
	ATT		MADE		TOTAL		%		3 PTR		THROW		%		PTS		BLOCKS		DEF		TOT		
	1	2	1	2	1	2	1	2	ATT	MDE	ATT	MDE	ATT	MDE	REG	ASST	VIOL	L.P.	OFF	DEF	TOT	TOT	
NORTH HALL	42							0	0													0	
WEST HALL	42		1	1	1	1	1	100%														2	
PROVIDENCE	42	0	1	1	1	0	0%				1			0	1						1	1	
JOHNSON CO (H)	42		1	1	1	1	100%															0	
HART CO (A)	42																						
JACKSON CO (H)	42																					0	
GAINESVILLE (A)	42																					1	
SOCIAL CIRCLE (H)	42		2		2	0	0%															1	
JEFFERSON (A)	42																					2	
EASTSIDE	42																					2	
SOCIAL CIRCLE	42		1	1	1	1	100%															0	
MONROE	42																					1	
JEFFERSON (H)	42																					1	
FRANKLIN CO (A)	42																					0	
EAST HALL (H)	42																						
DACULA (H)	42		1	1	1	1	100%															1	
JOHNSON (A)	42																					2	
HART CO (H)	42																					0	
JACKSON CO (A)	42																						
SOCIAL CIRCLE (A)	42	1		0	1	0	0%															1	
GAINESVILLE (H)	42		2	1	2	1	50%															3	
FRANKLIN CO (H)	42																					0	
EAST HALL (A)	42																					1	
DACULA (A)	42		1	0	1	0	0%																
JACKSON CO (A)	42																					0	
EAST HALL (A)	42		3	2	3	2	67%															2	
TOTALS	20	1	13	0	7	14	7	50%	0	0	0	6	2	33%	16	2	0	1	3	3	6	16	22

PPG 0.8

RPG 1.1

MATT NEEDHAM
44

Opponent	ATT		FIELD GOALS				TOTAL		%	3 PTR			FREE THROW			TOTAL			BLOCKS			REBOUNDS		
	1	2	1	2	1	2	ATT	MDE		ATT	MDE	ATT	MDE	ATT	MDE	PTS	REG	ASST	VIOL	L.P.	BLOCKS	OFF	DEF	TOT
NORTH HALL	44	6	6	3	6	12	9	75%				13	8	62%	26	1				2	4	6	10	
WEST HALL	44	3	8	1	6	11	7	64%				11	8	73%	22		4		1	1	1	7	8	15
PROVIDENCE	44	6	11	6	5	17	11	65%				2	1	50%	23	4			1	4	5	8	13	
JOHNSON CO (H)	44	7	9	2	5	16	7	44%	1			4	2	50%	16	2		1		3	2	6	8	
HART CO (A)	44	8	3	6	2	11	8	73%				5	1	20%	17			1		1	5	9	14	
JACKSON CO (H)	44	5	6	3	2	11	5	45%				5	4	80%	14	2		1	3	4	6	6	12	
GAINESVILLE (A)	44	8	3	4	2	11	6	55%				2	1	50%	13				3	3	5	2	7	
SOCIAL CIRCLE (H)	44	8	6	4	5	14	9	64%	3	3		2	2	100%	23	2		1		5	4	8	12	
JEFFERSON (A)	44	8	4	3	2	12	5	42%	2	0		2	2	100%	12	1	2		2	2	8	5	13	
EASTSIDE	44	7	3	4	1	10	5	50%				1	1	100%	11	1	4			2	3	10	13	
SOCIAL CIRCLE	44	2	4	0	1	6	1	17%				13	8	62%	10	2	4			3	3	7	10	
MONROE	44	5	5	1	3	10	4	40%				5	5	100%	13	2	4	1	1	5	3	3	6	
JEFFERSON (H)	44	7	7	3	4	14	7	50%				6	6	100%	20	1	6				7	13	20	
FRANKLIN CO (A)	44	2	3	1	2	5	3	60%				8	7	88%	13		2				1	9	10	
EAST HALL (H)	44	10	5	8	5	15	13	87%				6	3	50%	29	1	4	1	2	1	4	7	11	
DACULA (H)	44	5	2	3	2	7	5	71%				4	3	75%	13	1	1		2	1	2	4	6	
JOHNSON (A)	44	2	2	1	2	4	3	75%				2	2	100%	8	3	3		1	4		7	7	
HART CO (H)	44	10	2	8	2	12	10	83%				6	4	67%	24	1	4	1	2		3	4	7	
JACKSON CO (A)	44	6	4	3	2	10	5	50%				4	3	75%	13		2		1	2	3	7	10	
SOCIAL CIRCLE (A)	44	3	4	1	2	7	3	43%				4	3	75%	9	2	2			3	1	7	8	
GAINESVILLE (H)	44	4	1	1	1	5	2	40%				8	5	63%	9		4	1	1	2	1	4	5	
FRANKLIN CO (H)	44	4	2	2	2	6	4	67%				3	3	100%	11	2	2			2	5	4	9	
EAST HALL (A)	44	4	7	2	6	11	8	73%				2	2	100%	18	1	3			2	3	7	10	
DACULA (A)	44	8	2	5	1	10	6	60%				2	1	50%	13	4	3	1			5	7	12	
JACKSON CO (A)	44	4		1		4	1	25%				4	3	75%	5	2	1		2		1	4	5	
EAST HALL (A)	44	4	5	0	1	9	1	11%	1	0		6	5	83%	7		2		1	3	1	4	4	
TOTALS	26	146	114	76	72	260	148	57%	7	3	130	93	72%	392	35	57	9	22	53	94	163	257		

PPG 15.1

RPG 9.9

TRAVIS STEPHENS
45

Opponent	ATT		MADE		TOTAL		%		3 PTR		FREE THROW		TOTAL		%		REBOUNDS				
	1	2	1	2	ATT	MDE	ATT	MDE	ATT	MDE	ATT	MDE	PTS	REG	ASST	VIOL	L.P.	BLOCKS	OFF	DEF	TOT
NORTH HALL	45	7	5	2	1	12	3	25%	4	0			6	1	2		3		2	4	6
WEST HALL	45	6	4	4	1	10	5	50%	5	1	9	7	18		3	1	4		2	5	7
PROVIDENCE	45	8	7	5	4	15	9	60%	1	1			19		2	1	2	1	4	2	6
JOHNSON CO (H)	45	6	4	4	1	10	5	50%	4	2	8	4	16		2		2		7	4	11
HART CO (A)	45	1	1			2	0	0%	1		10	8	8	1	7	3	4		3	6	9
JACKSON CO (H)	45	7	6	3	1	13	4	31%	8	4			12	2	4				2	6	8
GAINESVILLE (A)	45	1	4		2	5	2	40%	2	2	3	2	8	1	3	2	1	1	4		4
SOCIAL CIRCLE (H)	45	6	4	3	2	10	5	50%	2	0			10	1	6				1	5	6
JEFFERSON (A)	45	9	5	6	3	14	9	64%	3	2			20	2	3		1	1	3	10	13
EASTSIDE	45	4	3	2	3	7	5	71%	2	1	2	2	13	1	3	1		1	2	5	7
SOCIAL CIRCLE	45	5	6	3	4	11	7	64%	3	1			15		5	1	2		5	3	8
MONROE	45	4	3	1	2	7	3	43%	4	1	1	1	8		4		1	2	2	5	7
JEFFERSON (H)	45	9	4	6	3	13	9	69%	4	2	1	1	21	1	7			2	6	12	8
FRANKLIN CO (A)	45	7	5	2	2	12	4	33%	2	0	4	4	12		11				4	4	8
EAST HALL (H)	45	5	5	2	4	10	6	60%	2	1			13	2	9		2	1	1	4	5
DACULA (H)	45	6	1	3	1	7	4	57%	3	1	2	2	11	3	7		2	2	3	5	5
JOHNSON (A)	45	3	4	3	1	7	4	57%	1	1	3	3	12	3	5		2	1	5	6	6
HART CO (H)	45	4	3	2	1	7	3	43%	3	0	2	2	8	1	6		1	1	7	8	8
JACKSON CO (A)	45	4	1	0	1	5	1	20%	1	0	4	4	6	1	5		3	4	7	11	11
SOCIAL CIRCLE (A)	45	2		1		2	1	50%	1	0	1		2	2	1				6	6	6
GAINESVILLE (H)	45	5	2	2	1	7	3	43%			2	2	8		5		1	1	4	5	9
FRANKLIN CO (H)	45	2	2	2	2	4	4	100%	1	1	1	1	10	2	4				1	4	5
EAST HALL (A)	45	5	3	1	0	8	1	13%			4	4	6	2	8		2		4	3	7
DACULA (A)	45	1		1		1	1	100%	1	1	6	5	8	3	9			1	2	2	4
JACKSON CO (A)	45	5	2	2	2	7	4	57%	3	1			9	2	6			1	2	2	4
EAST HALL (A)	45	5	5	4	4	10	8	80%	4	4	7	6	26		6		1	3	2	5	5
TOTALS	26	127	89	64	46	216	110	51%	65	27	70	58	305	31	133	9	34	11	72	113	185

TROY NASWORTHY
50

Opponent	ATT		MADE		TOTAL		%	3 PTR		FREE		TOTAL		REBOUNDS							
	1	2	1	2	ATT	MDE		ATT	MDE	ATT	MDE	PTS	REG	ASST	VIOL	L.P.	BLOCKS	OFF	DEF	TOT	
NORTH HALL																					
WEST HALL																					
PROVIDENCE																					
JOHNSON CO (H)	50				0	0							0								0
HART CO (A)																					
JACKSON CO (H)																					
GAINESVILLE (A)																					
SOCIAL CIRCLE (H)	50	1	1	0	0	0	0%	1	0				0	1					1	1	1
JEFFERSON (A)	50				0	0							0			1					0
EASTSIDE																					
SOCIAL CIRCLE	50				0	0	ERR						0	1					1	1	1
MONROE	50	1	0	1	0	0	0%						0								0
JEFFERSON (H)	50	1	0	1	0	0	0%	2	1				1						2	2	2
FRANKLIN CO (A)																					
EAST HALL (H)																					
DACULA (H)	50				0	0							0								0
JOHNSON (A)																					
HART CO (H)																					
JACKSON CO (A)																					
SOCIAL CIRCLE (A)	50				0	0							0								0
GAINESVILLE (H)																					
FRANKLIN CO (H)	50	3	1	3	1	3	33%	2	1				3								0
EAST HALL (A)																					
DACULA (A)	50	2	2	2	2	2	100%	1	1				5								0
JACKSON CO (A)																					
EAST HALL (A)	50				0	0							0								0
TOTALS	11	0	8	0	3	8	38%	4	2	2	1	50%	9	0	1	1	0	2	3	1	4

PPG 0.8

RPG 0.4

BRANDON YANCEY
52

Opponent	FIELD GOALS										FREE THROW				TOTAL			REBOUNDS				
	ATT		MADE		TOTAL		%		3 PTR		FREE		TOTAL			REBOUNDS						
	1	2	1	2	ATT	MDE	%	ERR	ATT	MDE	ATT	MDE	PTS	REG	ASST	VIOL	L.P.	BLOCKS	OFF	DEF	TOT	
NORTH HALL																						
WEST HALL																						
JEFFERSON TIPOFF																						
JOHNSON CO (H)	52		0	0	0	0	ERR				2		0				1				2	2
HART CO (A)																						
JACKSON CO (H)																						
GAINESVILLE (A)																						
SOCIAL CIRCLE (H)	52	1	1	1	1	1	100%						2	1	1		1		1	2	2	4
JEFFERSON (A)	52		0	0	0	0							0									0
EASTSIDE																						
SOCIAL CIRCLE	52	1	0	1	0	0	0%						0								1	1
MONROE	52	1	1	1	1	1	100%						2								2	0
JEFFERSON (H)	52		0	0	0	0							0								0	0
FRANKLIN CO (A)																						
EAST HALL (H)																						
DACULA (H)	52	1	1	1	1	1	100%						2								1	1
JOHNSON (A)																						
HART CO (H)																						
JACKSON CO (A)																						
SOCIAL CIRCLE (A)	52		0	0	0	0							0								1	1
GAINESVILLE (H)																						
FRANKLIN CO (H)	52		0	0	0	0					2	1	1									0
EAST HALL (A)																						
DACULA (A)	52		0	0	0	0																0
JACKSON CO (A)			0	0	0	0																0
EAST HALL (A)			0	0	0	0																0
TOTALS	10	0	4	0	3	4	75%		0	0	4	1	7	1	1	0	2	1	7	2	9	

PPG 0.7

RPG 0.9

RECENT SCHOOL RECORDS

INDIVIDUAL GAME HIGH RECORDS

MOST FIELD GOALS (TOTAL) (3 POINT)	Ti Wilder; 16 vs. Social Circle 12-15-95 Zeb Reid; 8 vs. Jefferson 1-4-97
BEST FIELD GOAL PERCENTAGE*	Wes Nash; 88% (14 of 16) vs. Oglethorpe Co. 11-19-94
MOST FREE THROWS	Robbie Nash; 16 vs. East Hall 2-23-95
BEST FREE THROW PERCENTAGE*	Robbie Nash; 94% (15 of 16) vs. Johnson 2-3-95 Zeb Reid; 100% 13 times shooting less than 10 in '96-'97 season
MOST OFFENSIVE REBOUNDS	Ti Wilder; 10 vs. Mt. Vernon 11-18-95 10 vs. Providence 12-28-95
MOST DEFENSIVE REBOUNDS	Ti Wilder; 19 vs. Social Circle 12-15-95 19 vs. Providence 12-27-95
MOST REBOUNDS	Ti Wilder; 29 vs. Providence 12-27-95
MOST STEALS	Robbie Nash; 8 vs. Johnson 2-3-95
MOST ASSISTS	Travis Stephens; 11 vs. Franklin Co. 1-7-97 Robbie Nash; 11 vs. Oglethorpe 11-19-94
MOST BLOCKED SHOTS	Matt Needham; 5 vs. Social Circle 12-26-96 5 vs. Monroe 12-30-96
MOST POINTS IN ONE QUARTER	Zeb Reid; 21 vs. Franklin Co. 1-7-97
MOST POINTS IN ONE HALF	Zeb Reid; 26 vs. Franklin Co. 1-7-97
MOST POINTS SCORED *10 or more attempts	Zeb Reid; 40 vs. Jefferson 1-4-97

INDIVIDUAL SEASON HIGH RECORDS

MOST FIELD GOALS	Robbie Nash; 215 (Total FG), 1995 Ben Bailie; 60 (3 pt. FG), 1997
BEST FIELD GOAL PERCENTAGE** (2 pt.) (3 pt.) (Total)	Zeb Reid; 61% (163 of 269), 1997 Zeb Reid; 46% (47 of 102), 1997 Travis Stephens; 57.3% (106 of 185), 1996 Robbie Nash; 138, 1995
MOST FREE THROWS	Robbie Nash; 138, 1995
BEST FREE THROW PERCENTAGE**	Zeb Reid; 89% (73 of 82), 1997
LEADING SCORER	Robbie Nash; 617 pts., 22.8 avg., 1995
LEADING OFFENSIVE REBOUNDER	Ti Wilder; 147 OR, 5.4 avg., 1996
LEADING DEFENSIVE REBOUNDER	Ti Wilder; 215 DR, 8 avg., 1996
MOST STEALS	Robbie Nash; 85, 3.1 avg., 1995
MOST ASSISTS	Zeb Reid; 154, 5.9 avg., 1997
MOST BLOCKED SHOTS	Matt Needham; 53, 2.0 avg., 1997
MOST CONSECUTIVE FREE THROWS **50 or more attempts	Zeb Reid; 22, 1997 Robbie Nash; 22, 1995

TOP TEN SCORERS
(SINGLE GAME)

<u>PLAYER</u>	<u>TOTAL</u>	<u>OPPONENT</u>	<u>DATE</u>
Zeb Reid	40	Jefferson	1-4-97
Robbie Nash	36	Jefferson	12-3-94
Wes Nash	35	Oglethorpe	11-19-94
Robbie Nash	34	Franklin County	2-18-95
Ti Wilder	33	Social Circle	12-15-95
Zeb Reid	33	Jefferson	12-2-95
Robbie Nash	33	Johnson	2-15-95
Zeb Reid	32	Social Circle	1-25-97
Ti Wilder	32	Social Circle	2-9-96
Robbie Nash	32	Johnson	2-3-95

TOP TEN REBOUNDERS

Ti Wilder	29	Providence	11-25-95
Ti Wilder	24	Social Circle	12-15-95
Matt Needham	20	Jefferson	1-4-97
Ti Wilder	19	Social Circle	2-9-96
Ti Wilder	19	Johnson	1-5-96
Ti Wilder	19	Jefferson	12-2-95
Ti Wilder	19	White County	12-17-94
Ti Wilder	17	Mt. Vernon	11-18-95
Ti Wilder	17	Jefferson	2-4-95
Ti Wilder	16	vs. 3 different teams	

**TOP TEN IN ASSISTS
(SINGLE GAME)**

<u>PLAYER</u>	<u>TOTAL</u>	<u>OPPONENT</u>	<u>DATE</u>
Travis Stephens	11	Franklin County	1-7-97
Robbie Nash	11	Oglethorpe	11-19-94
Zeb Reid	10	West Hall	11-27-96
Zeb Reid	10	Jefferson	12-20-96
Zeb Reid	10	Jefferson	1-4-97
Mike Dunn	10	Dacula	1-23-96
Mike Dunn	10	Franklin County	2-6-96
Zeb Reid	9	Hart County	1-21-97
Zeb Reid	9	Social Circle	1-25-97
Travis Stephens	9	East Hall	1-10-97
Travis Stephens	9	Dacula	2-7-97
Mike Dunn	9	Johnson	11-22-95
Robbie Nash	9	Jefferson	2-4-95

1,000 POINT CLUB

ROBBIE NASH 1,232 CAREER POINTS 1993-95 Seasons

NOTE: We are attempting to establish some school records. If you have documented information (newspaper articles, scorebooks, etc.) on these or other stats, we will be glad to include them in the future.

1997 ANNUAL AWARD WINNERS

MOST VALUABLE PLAYER

**ZEB REID
TRAVIS STEPHENS**

BEST EFFORT AWARD

ERIK GROVER

MOST IMPROVED AWARD

BEN BAILIE

BEST DEFENSIVE AWARD

BRIAN HOBBS

SPORTSMANSHIP AWARD

MATT NEEDHAM

MOST VALUABLE SUBSTITUTE

MILOS PARAVINJA

1996 SEASON

Most Valuable Player	Ti Wilder
Best Effort Award	Travis Stephens
Most Improved Award	Zeb Reid
Best Defensive Award	Mike Dunn
Sportsmanship Award	Josh Mobley
Most Valuable Substitute	Keith Wages

1995 SEASON

Most Valuable Player	Robbie Nash
Best Effort Award	Travis Stephens
Most Improved Award	Ti Wilder
Best Defensive Award	Mike Dunn
Sportsmanship Award	Wes Nash
Most Valuable Substitute	Jason Blankenship



★ ★ ★ **SPECIAL HONORS AND AWARDS** ★ ★ ★

1996-97 SEASON

BEN BAILIE All Tournament Team
L. H. S. Christmas Invitational Tournament

MATT NEEDHAM Most Valuable Player Atlanta Tipoff Club
Jefferson Tipoff Tournament Team of the Month

ZEB REID All Tournament Team Atlanta Tipoff Club
Jefferson Tipoff Tournament Team of the Month

Most Valuable Player
L.H.S. Christmas Invitational Tournament

Top Five Player in Region 8AA

1995-96 SEASON

MIKE DUNN Most Valuable Player Atlanta TipOff Club
Jefferson Tipoff Tournament Team of the Month

TI WILDER All Tournament Team Atlanta TipOff Club
Jefferson Tipoff Tournament Team of the Month

1994-95 SEASON

ROBBIE NASH Most Valuable Player Most Valuable Player
Jefferson Tipoff Tournament TMC Holiday Tournament

Atlanta Tipoff Club Atlanta Tipoff Club
Team of the Month All-Metro Atlanta
Team of the Year

1995 All-Walton County
Team of the Year

WES NASH Jefferson Tipoff Tournament 1995 All-Walton County
All-Tournament Team Team of the Year



On February 15, 1997, Coach Ronald M. Bradley was inducted into the State of Georgia Sports Hall of Fame.

This was a very special honor as there are few members known for the sport of basketball, and even fewer who are voted in and inducted while still active in their careers, as is Coach Bradley. As a small tribute to him, I would like to include the wording on the plaque presented to him at his induction as his name will be forever enshrined in the Georgia Sports Hall of Fame. The article on the following page was in the program from that ceremony. In this way we can somewhat share what was a most memorable occasion with many of you who have been a special part of our lives for several years. Thank you!

Born in Manchester, Ga., November 19, 1934. Lived in the Atlanta area where he was an outstanding athlete in football, basketball and baseball at Avondale High School. Led his team to the state baseball championship in 1952 and the state basketball finals in 1953. Leading scorer on the football and basketball teams, and leading hitter on the baseball team his senior year. Graduated from U. of Georgia in 1957, earning four varsity letters in baseball and three in basketball. Member of SEC championship and SEC runner-up baseball teams at UGA and was MVP as a senior. One of Georgia's most outstanding high school coaches of all time, he holds one of the top basketball records in history with a 1,135-269 record in 37 seasons. Spent 18 years at Newton Co. H.S. (17 years as boys basketball coach with a 430-68 record, one state championship and two state runners-up); 12 at George Walton Academy, five at Trinity Christian School and is currently in 3rd year at Loganville H.S. His legendary teams at Newton Co. set a national record 129 straight home court victories when his teams did not lose at home in more than eight years. Spent 17 seasons as head varsity football coach (122-55-6 record) and 18 seasons as head varsity baseball coach (158-60 record). His overall record includes four state championships, six state runners-up, 24 region championships, a total of 92 team championships. Currently coaching his 105th varsity team - boys basketball (37), girls basketball (15), football (17), baseball (18) and golf (18). Has coached numerous state, national and international all-star teams, and has received many state and national coaching awards.

The first-year teacher sized up the student pretty fast. The student simply wasn't catching on to the subject matter and the teacher thought "this is one of the dumbest kids I've ever been around."

A few weeks passed and the teacher found himself on the way to Atlanta in a borrowed truck to pick up some furniture. Along the way, the truck broke down and the teacher, who was helpless in mechanical areas, was stranded. Soon after, a car pulled alongside and the driver - the student - offered assistance. Within a matter of minutes, the truck was running again and the teacher continued his trek to Atlanta. Along the way, the teacher thought repeatedly about "How dumb I was and how smart that youngster was."

That experience helped the teacher - Ronald M. Bradley - realize that every person has a worth and that it is his job as a teacher and a coach to help a person realize his or her worth.

"I like to say that I am working with eaglets. They don't know right now how high they are going to fly," Bradley said. "It's like the story about the eaglet who got into a chicken pen. One day, that eaglet saw a beautiful eagle flying and said 'I wish I could fly like that.' One of the chickens told him 'You're just a chicken like us. Stop dreaming.'"

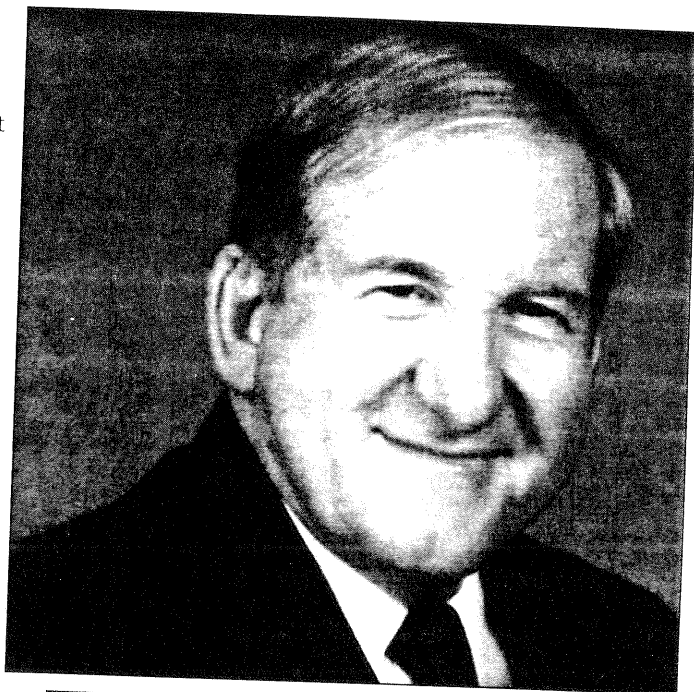
"I don't want kids to stop dreaming. I want to see them soar." For nearly four decades, Bradley has helped kids find their dream and has helped them to soar.

He has done it in the classroom as a teacher and he has done it in the athletic arena as a coach. Bradley is completing his 38th year as a high school coach including the last three as the boys head basketball coach at Loganville High School. He entered the 1996-1997 season with 1,113 wins leading both boys and girls teams, giving him the most victories among active coaches in Georgia. He has coached squads to 70 team championships, 29 state tournaments, seven state finals and three state championships. Fifty-five of his players garnered All-State honors and one was tabbed as an All-American. In a nine year span, Bradley's teams won a national record, 129 straight home games. In another 10-year span, every starter but three received a college scholarship.

"When you're in it, you don't think about the years," Bradley said. "Every year is special - they're special to me and they're special to the kids. I've always tried to treat each year as special. Once a season is over, it's history and it's time to get ready for the next. I really enjoy what I'm doing. Every year takes on its own personality and it's exciting when you get into it.

"Every day there's a goal, I want to do a better job and I want to help young people be more successful and prepare for their future. They don't know about the young men and women from the past; their year is special to them. They want to be a part of something special, so we do everything we can for that to happen."

Bradley didn't set out to become a high school teacher and coach. He attended Avondale High School, where he was a standout football, basketball, and baseball player. He then went to the University of Georgia, earning seven letters in baseball and basketball and being named the baseball MVP in 1957. After college, he took a job in a recreation department in Fort Lauderdale, Fla., "but it didn't work out because



Ronald M. Bradley

by Steven Colquitt

I had to put up with a lot of things I didn't have control over like discipline."

Bradley had been offered a position at Newton County High School in Covington before going to Florida. He called to see if the position was still open. It was, and he settled there. That was a marriage that lasted for 18 years, Bradley then spent 12 years at George Walton Academy in Monroe, five years at Trinity Christian in Dublin and the last three at Loganville.

All told, Bradley has coached 104 varsity teams - basketball, football, baseball and golf. And you know what? He's ready to coach 104 more.

"One of the most important things we've got going today is athletics," Bradley said. "When you're a member of a team you're a member of an exclusive club. You're going to experience highs and lows in athletics, but you're going to experience highs and lows in life, so you learn how to deal with them.

"I figured out that a young person is going to spend 2,000 hours of his or her own time under my direction, so I've got to teach them more than just how to dribble a ball or shoot a ball or kick a ball. I've got to share values other than just the game itself because 'I'm working with the most valuable possession a couple has.

"You don't know who's going to attain what in life but you know they're all going to attain something. I've got to help arm them with anything I can to give them a chance. Happy memories make happy people. I want kids to dream, to reach that dream and then find another dream. Life is a marathon not a sprint. It takes time."